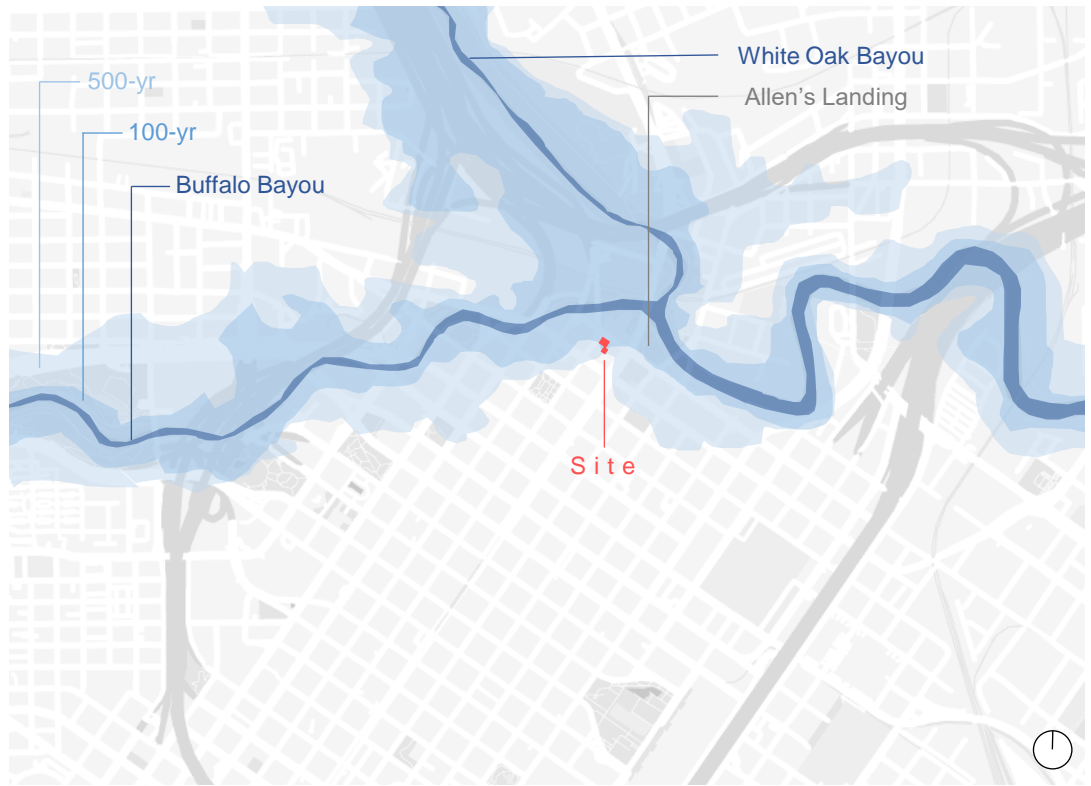
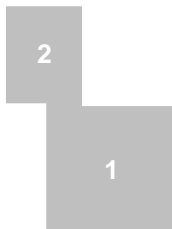




# Architecture Center Houston Phase One

The design for 902 Commerce Street addresses several challenges including **adaptive reuse**, **flexible program**, and **flood resiliency**. The space is nestled beneath a concrete parking garage built in 2000 behind the North and West facing masonry facades of the historic 1906 Reisner Building. The space includes offices for AIA Houston, a multi-purpose exhibition area which can be subdivided by a 22ft long rolling partition, a conference room that can be subdivided with swinging partitions, a kitchenette and storage rooms. The main exhibition space receives natural light from a new thermally broken steel storefront along the street that pays homage to the building's early function as an agricultural distribution center. A combination of active and passive flood-proofing solutions allow the main spaces to flood with minimal damage, while a flood-proof core is protected by 9ft tall cast-in-place concrete walls and steel flood doors. Ribbons of suspended plywood ceilings serve as an acoustic treatment with varying patterns to accommodate sound reflection or absorption where needed. The ceiling also conceals lighting, fire sprinklers, HVAC and speakers. Its strong visual presence infiltrates every room and will, eventually, lead visitors into Phase Two of the project.





Corner of Commerce Street and Travis Street, Early 1900s

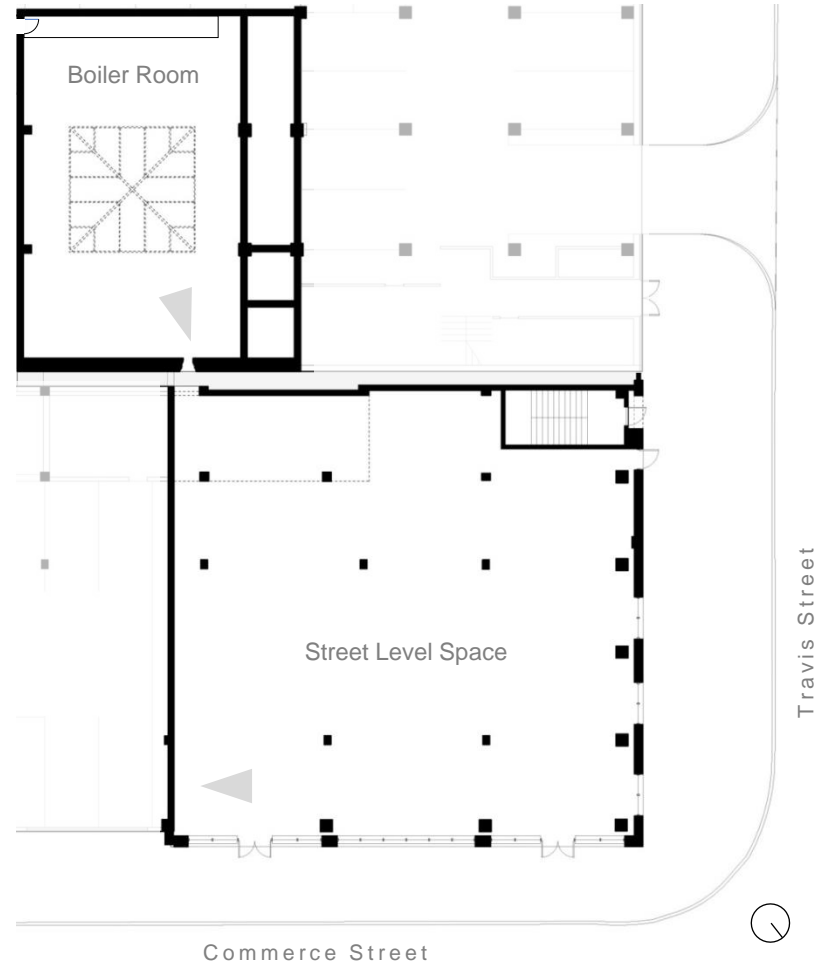




Phase Two Boiler Room



Phase One Street Level







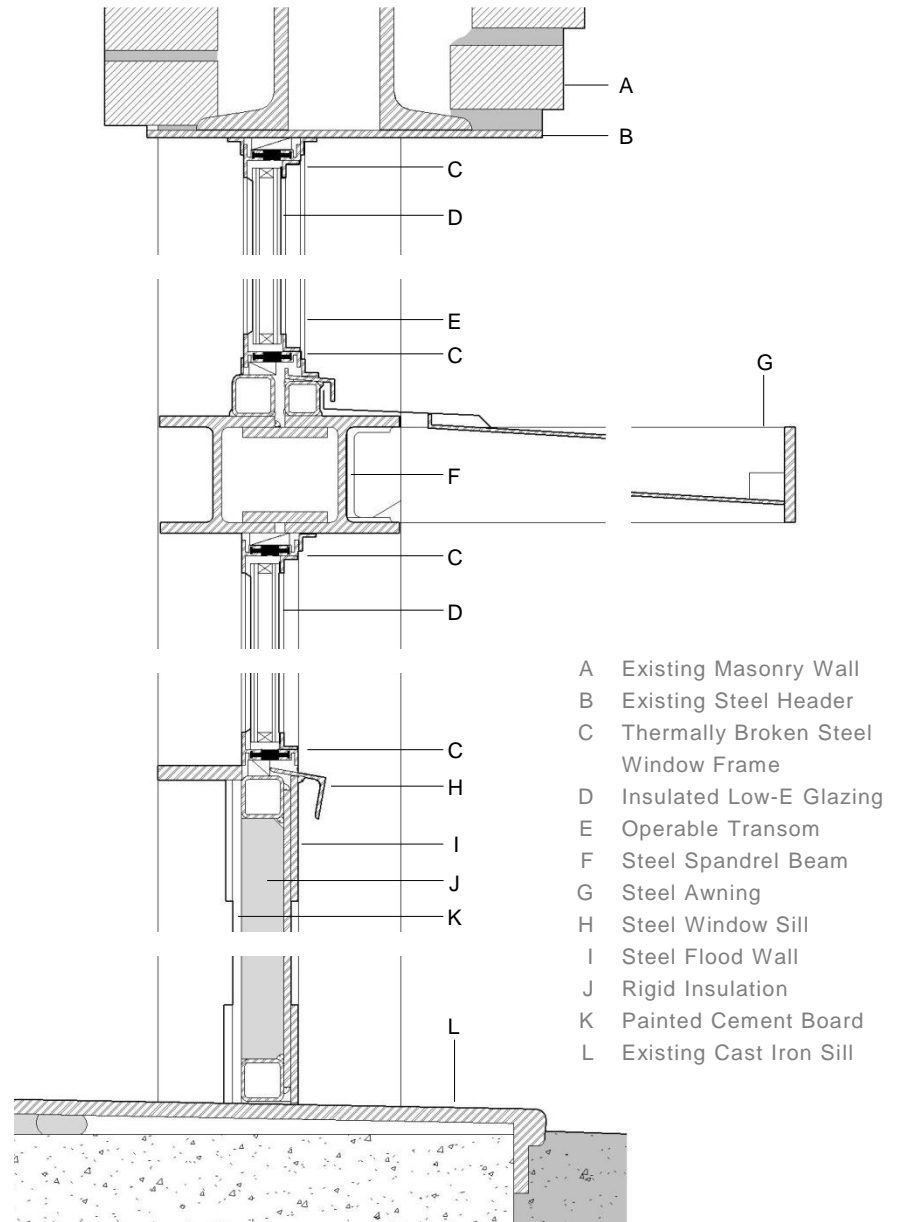
Historic Façade  
Future Solar Array  
Future Rainwater Collection  
Existing Parking Garage

Phase Two  
Boiler Room

Phase One  
5,204 sq-ft street-level space housing the AIA Houston  
and Architecture Center offices and flexible exhibit space  
visible to the public from the streetscape



Storefront Facing Commerce Street







Entry Vestibule

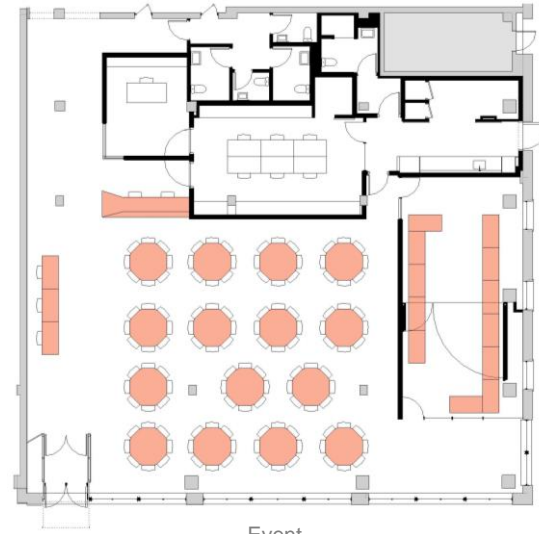




Rolling Partition in Main Exhibition Space



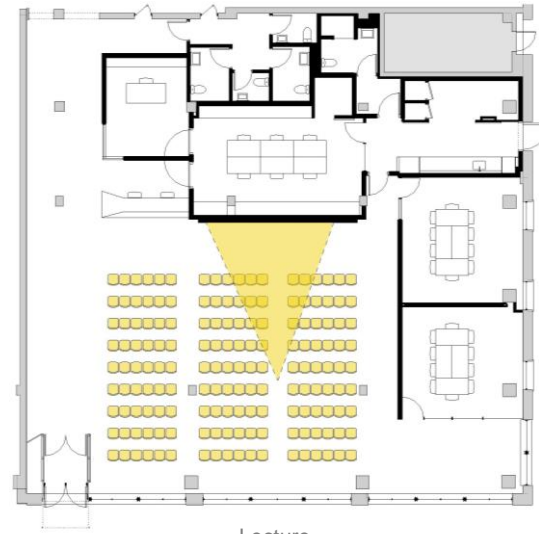
Classroom



Event



Exhibit

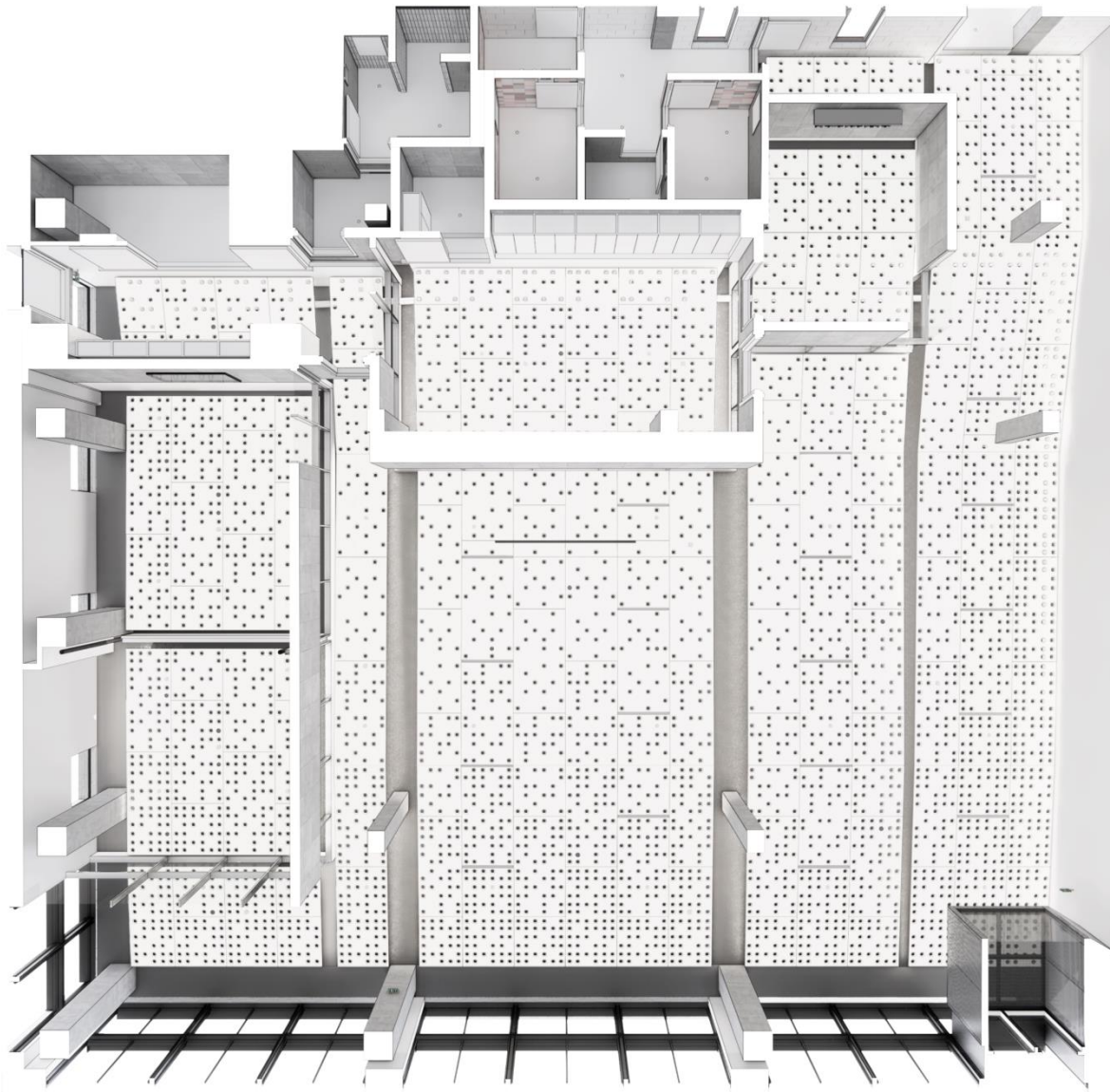


Lecture



Main Exhibition Space





Reflected Ceiling Plan

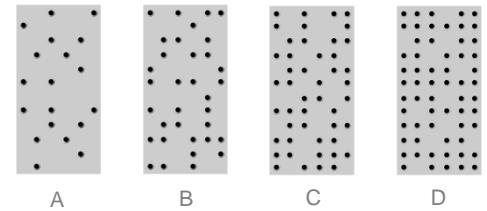
## Suspended Ceiling

4' x 8' prefabricated painted plywood ceiling panels with apertures for lighting, fire sprinklers, and acoustics.

Beveled apertures allow the exhibit lighting to be adjustable on an angle without causing glare or hot spots on the cut surface of the plywood.

Four panel types provide varying degrees of sound absorption depending on the needs below. These panels are arranged around the position of a lecturer to project their voice to the audience while reducing reverberation near the storefront.

Ceiling Panel Types





Main Exhibition Space



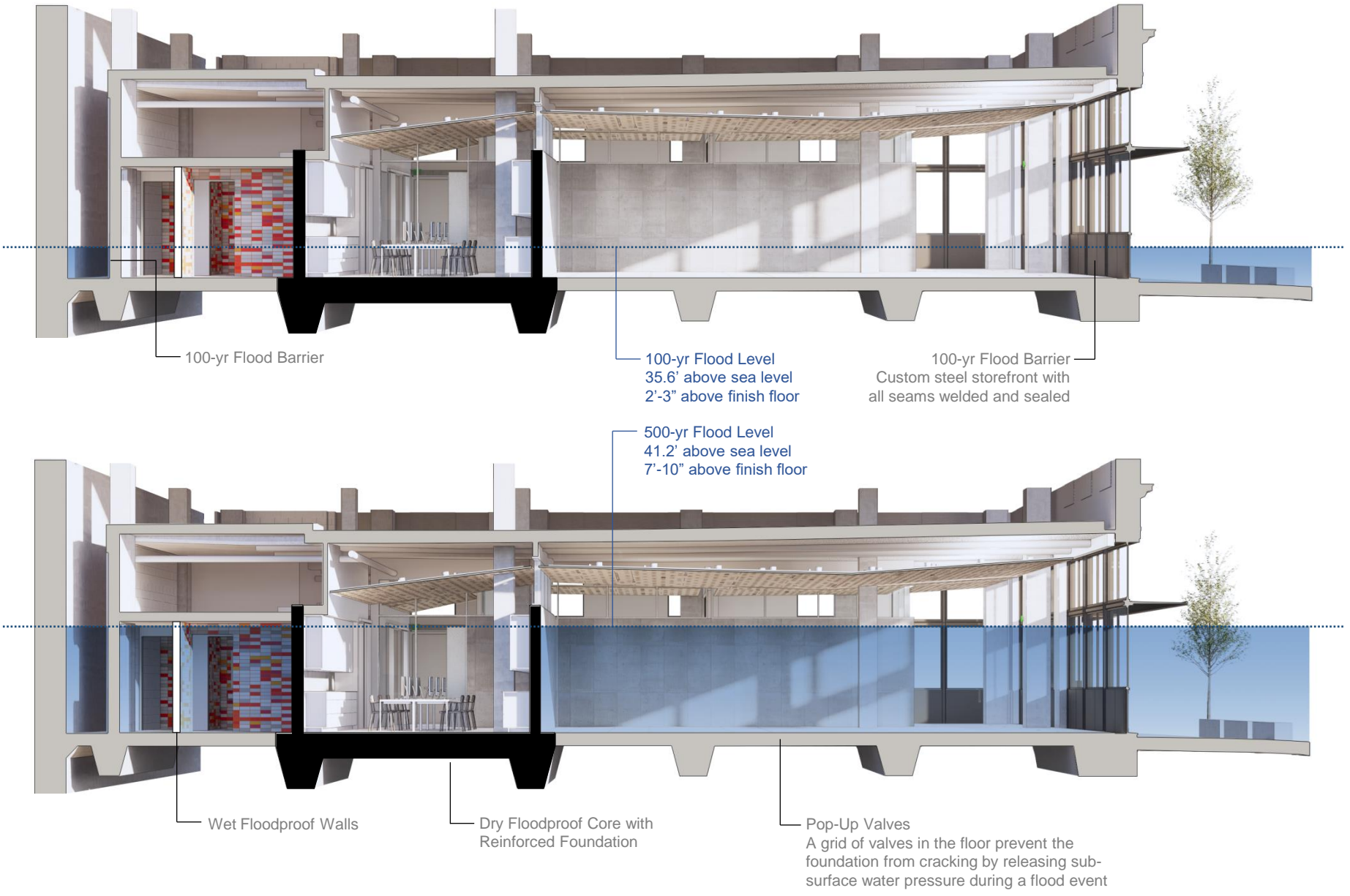


Meeting Room





902 Commerce, Hurricane Harvey, 2017





Reception and Dry Floodproof Core





Executive Director's Office and Flood Door into Dry Flood-Proof Core



Interior of Dry Floodproof Core, Flood Doors Open





Architecture Center Houston Phase One