

PUZZLE HOUSE



Located in Houston Heights, this family of four desired to preserve the footprint of their historic bungalow with their new home on the same lot.

Having lived in the neighborhood for over a decade, the front porch, shade trees, and character of the community were important items to maintain.

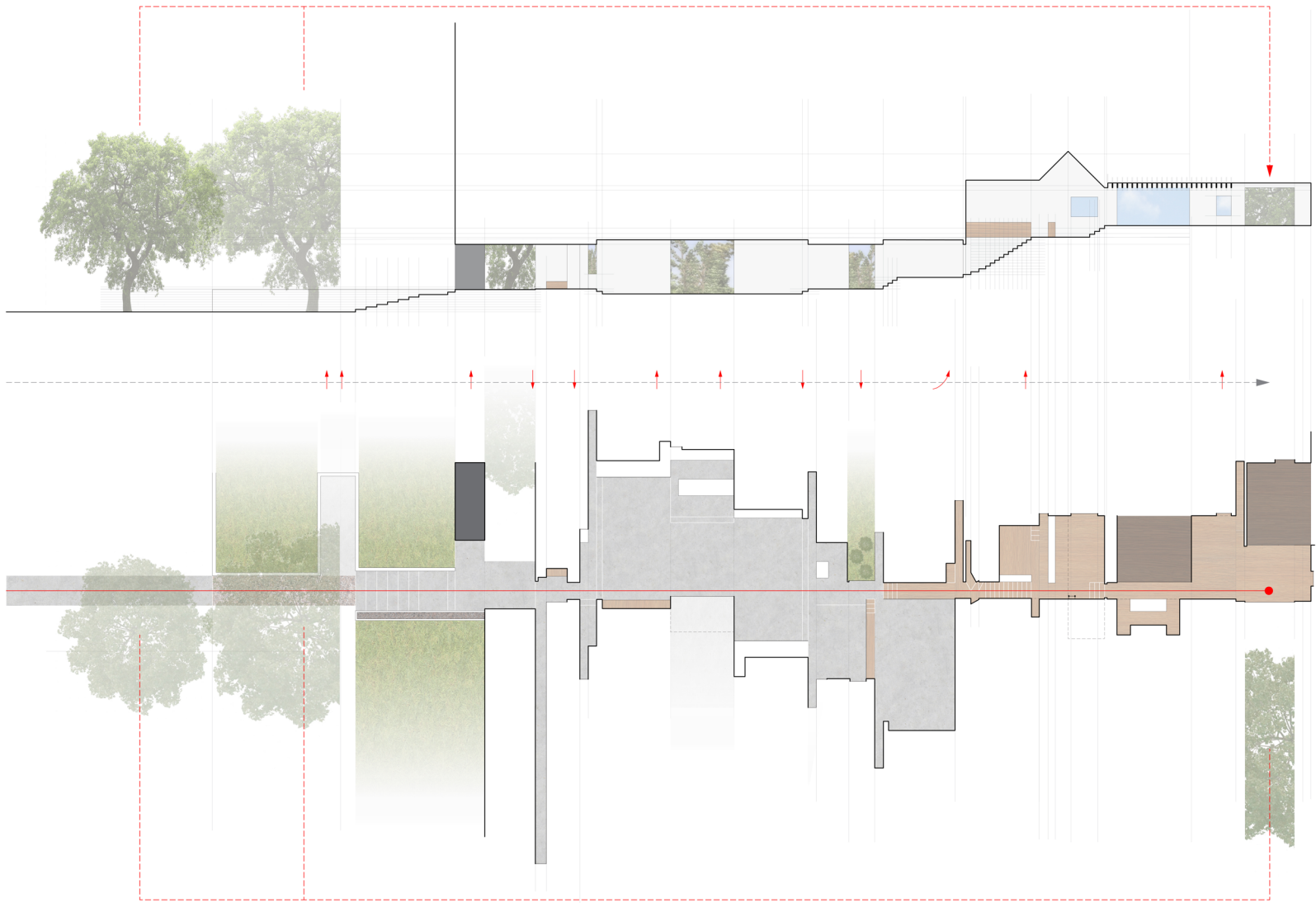




a furring strip exaggerates the depth of the fiber cement lap siding, paying homage to the cladding of the traditional bungalows



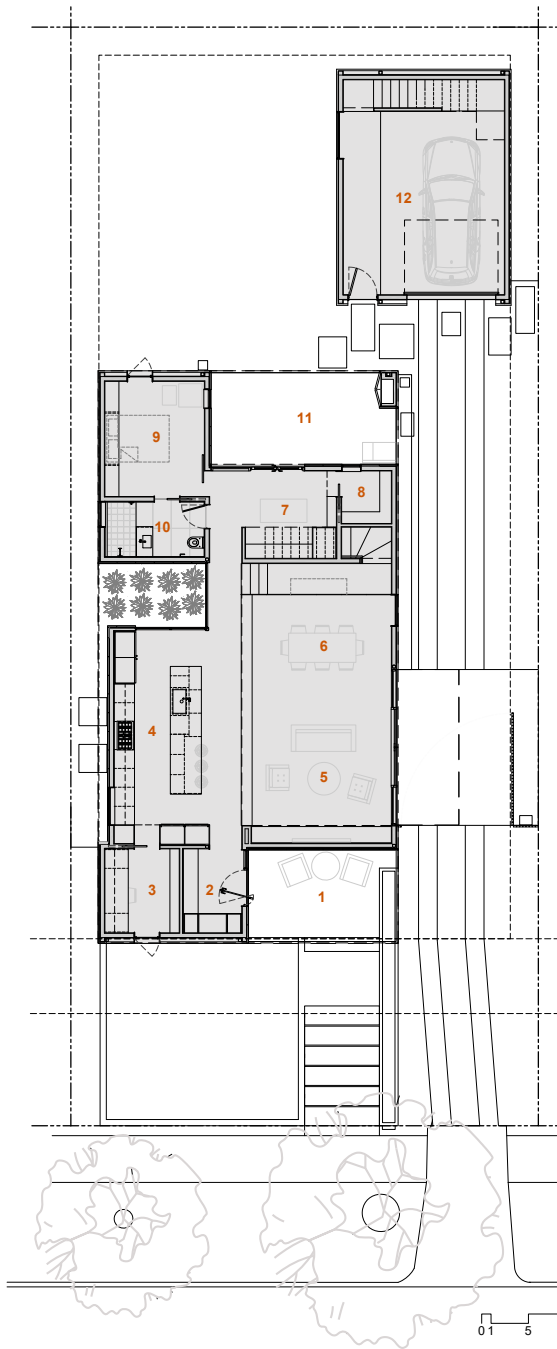
inclusion of the two live oak trees at the front of the property was a priority for the design



a circulation drawing illustrates material transitions, level changes, and shows the two trees as a threshold upon entry, becoming framed in the view from the primary bedroom

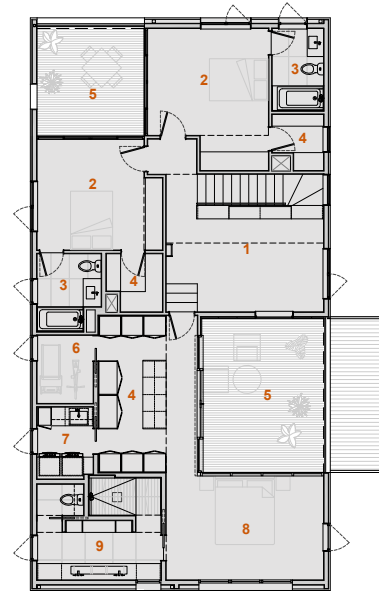
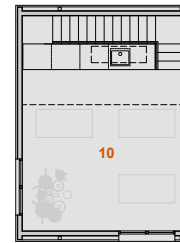


level changes define an otherwise open living space while an internal atrium brings in natural light and vegetation



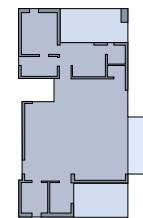
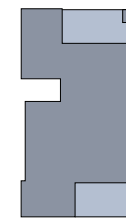
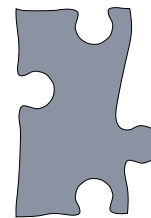
Ground Floor

1. Front Porch
2. Entry
3. Office
4. Kitchen
5. Living
6. Dining
7. Puzzle Room
8. Pantry
9. Guest Bedroom
10. Guest Bathroom
11. Back Porch
12. Garage



Upper Floor

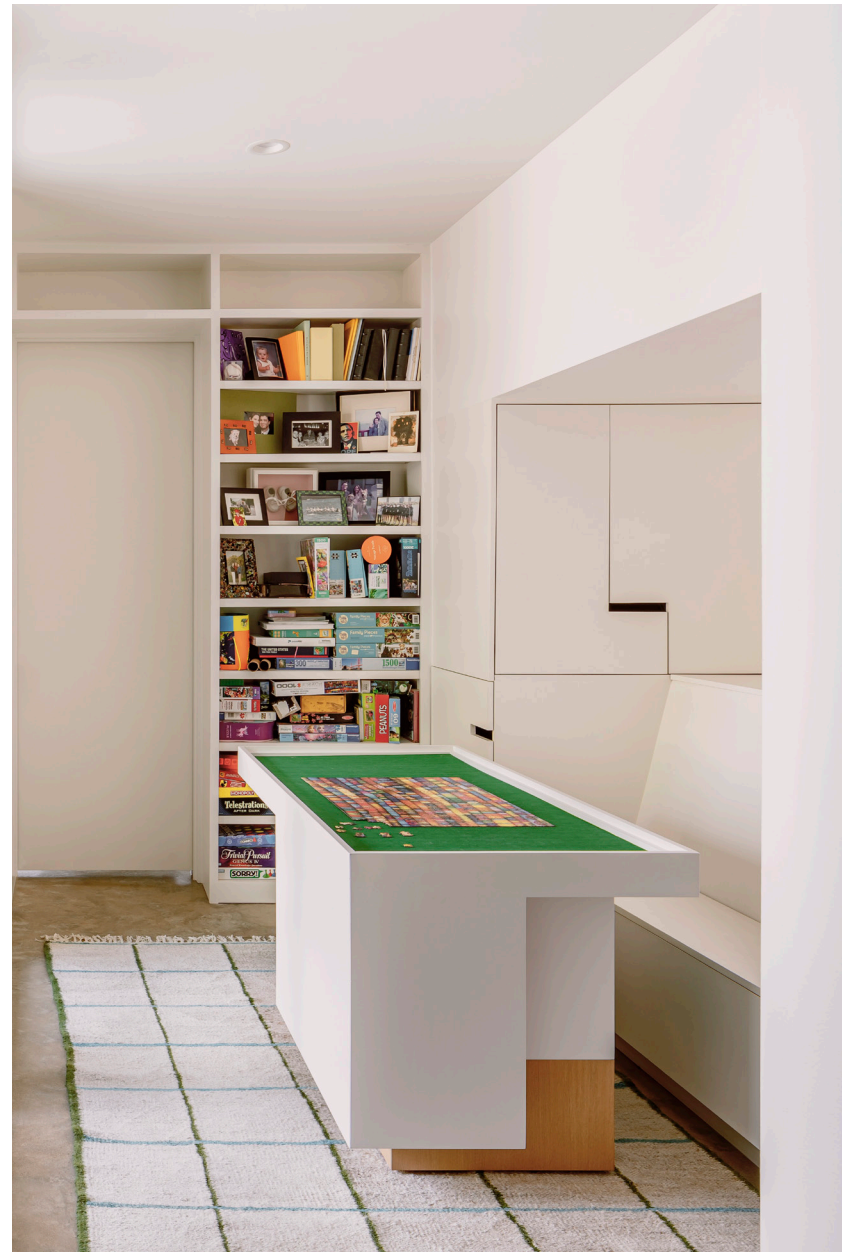
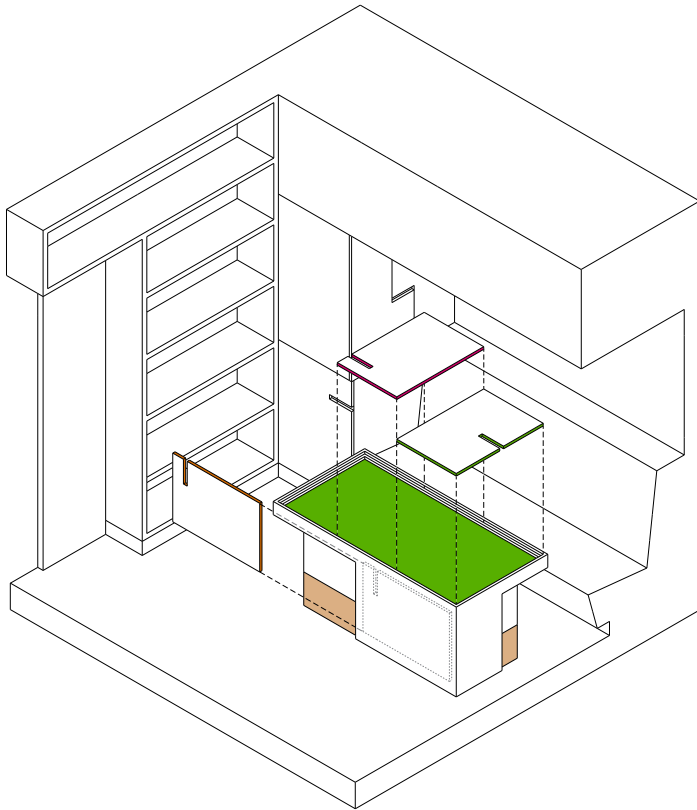
1. Playroom
2. Bedroom
3. Bathroom
4. Closet
5. Patio
6. Exercise
7. Laundry
8. Primary Bedroom
9. Primary Bathroom
10. Artist Loft



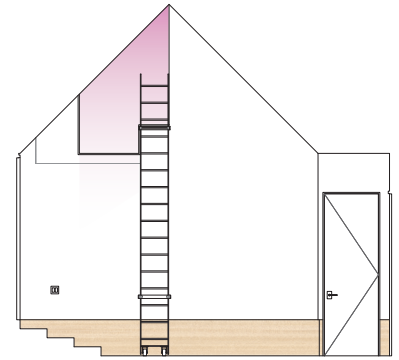
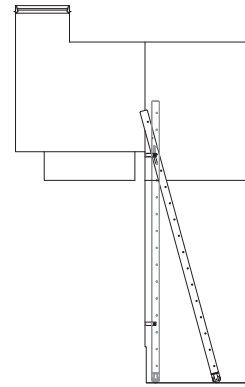
the family's love of puzzles served as inspiration for a plan that uses the interlocking nature of the puzzle piece to connect interior and exterior spaces



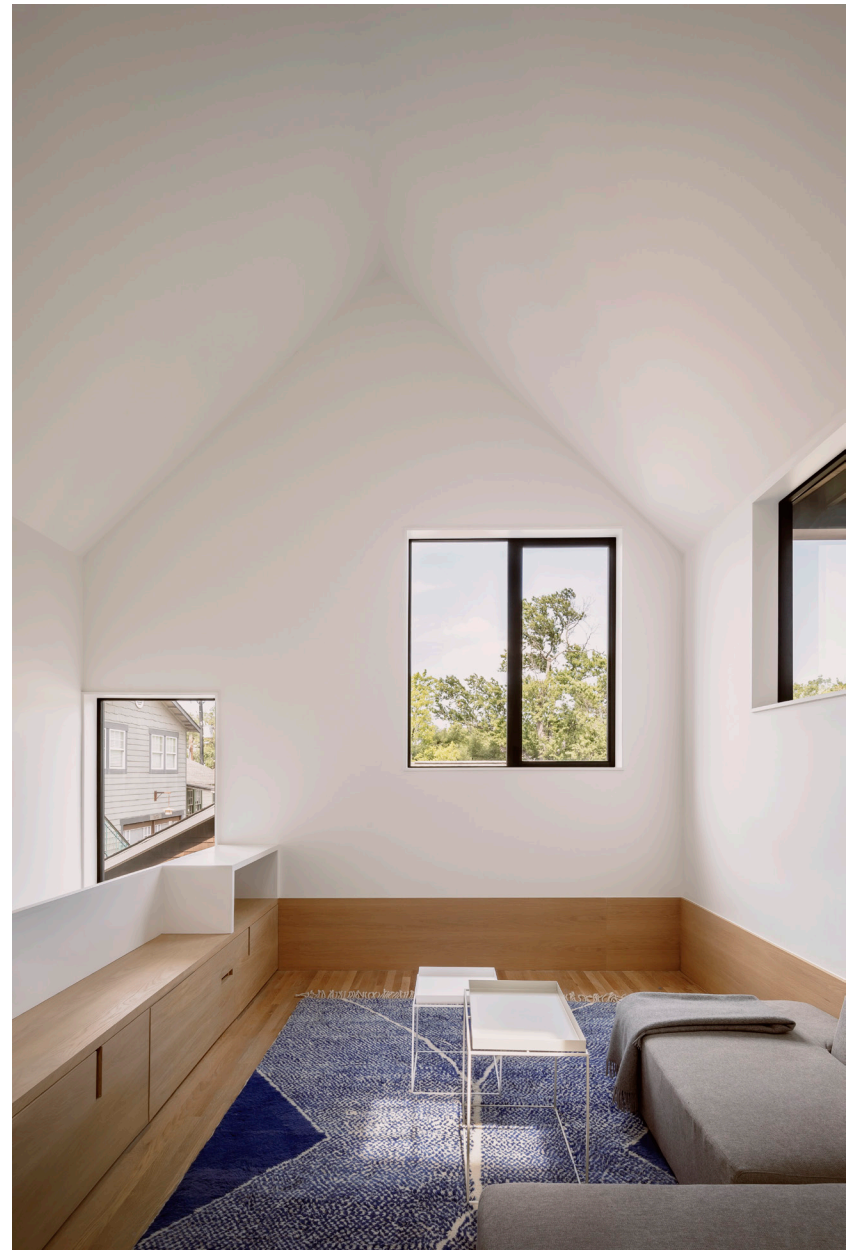
throughout the house interlocking cabinet doors reference puzzle pieces at a smaller scale



a custom designed table and built-in seating provide a dedicated space for puzzles, games, and homework



a vaulted playroom connects to a reading loft with a skylight while the high stained base registers the level of the adjacent primary bedroom suite



the architect provided furniture selections throughout the interior that provide comfort and color



a large window at the foot of the bed frames a view of the oak trees and their canopy



the wall of windows behind the bed captures the reflection of the tree in the front yard



a recessed patio opens to the primary suite, bringing natural light into the bedroom and closet



dark metal panels define the exterior patios at the front porch, back porch, and off each bedroom



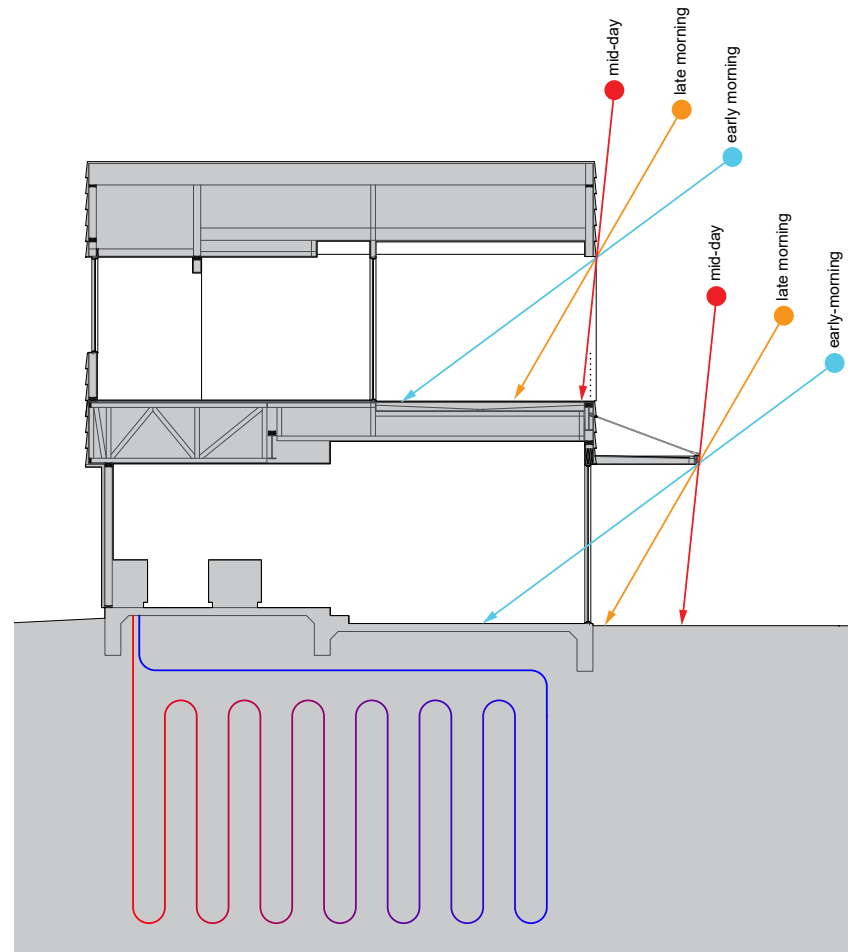
the studio above the garage overlooks a backyard for gathering, raising chickens and growing vegetables



the studio provides a space for creating art and music



unfinished plywood panels offer a durable resilient surface for hanging work



deep patios and an extended canopy protect expansive windows from the morning sun a geothermal system regulates temperatures and PV panels on the roof provide energy

