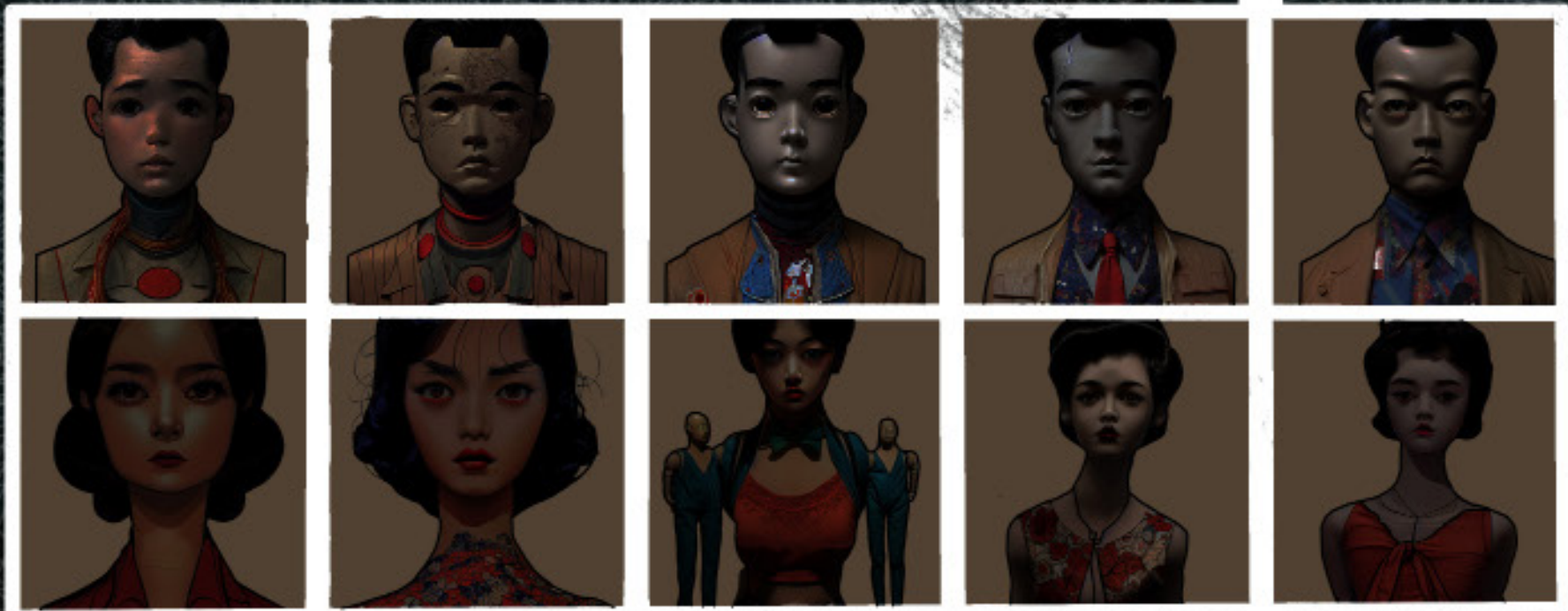




Subject #002, cause of lab accident, creates biological warfare. The only sterile site is the Nevada Test Site. Occupied by Mannequins...

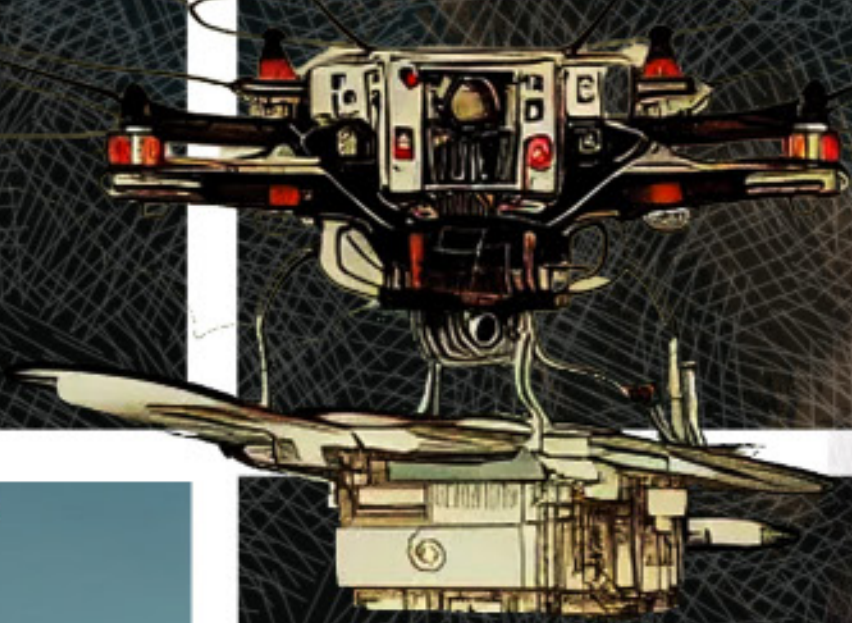




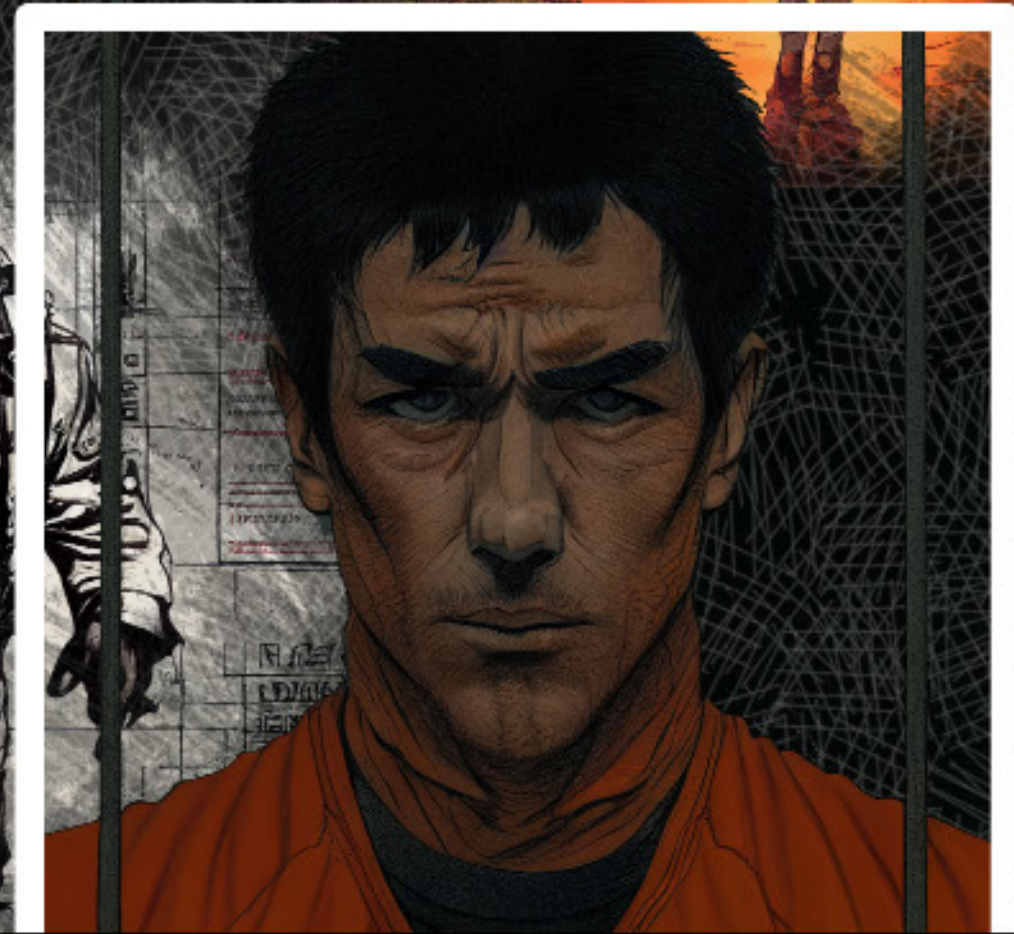
Utilizing brainwashing techniques Subject #002 is much more inclined to take part in the Nevada Test Site Nuclear Zone experiment as the subject is detached from his crimes and believes the only safe zone is a faux town occupied by only mannequins. Subject #002 reality is distorted thinking the mannequins are real people and the subject believes in the subject's ability in free will encouraged to reside in this "town" advertised by the local real estate agent: Jerry, a mannequin believed to be human in the eyes of the subject.

①

②



Subject #002: Scientist located at Area 51 labs. Assigned to alien experimental studies on project C.U.R.E.



Testings are very successful aiding in a variety of ailments. Subject #002 over distributes C.U.R.E processes resulting in biological warfare. U.S. government saves face publicly criminalizing Subject #002 then recruiting subject to a new set of experiments

Biological warfare brings about the transformation of humans into alien beings characterized by blood leaking from the eyes, mouth and nose followed by a variety of deformities such as before transforming. These aliens subject to mimic the human anatomy however are identified by the process of transformation in the late stages which includes blacked out eyes and vibrant unnatural eye colors. Once the transformation is complete at the late stages, it is hard to distinguish human from alien. The only distinguishing factor at the late stages of the transformation include the procedure of blood drawing where apparent characteristically blue-teal blood is drawn. Due to the undistinguishable and the highly contagious nature of the evolved parasite quarantine is impossible. The only sterile zone is the uninhabitable Nevada Test Site which the U.S. government takes a gamble and tests its habitability, appointing Subject #002...

①

②

③

④

⑤

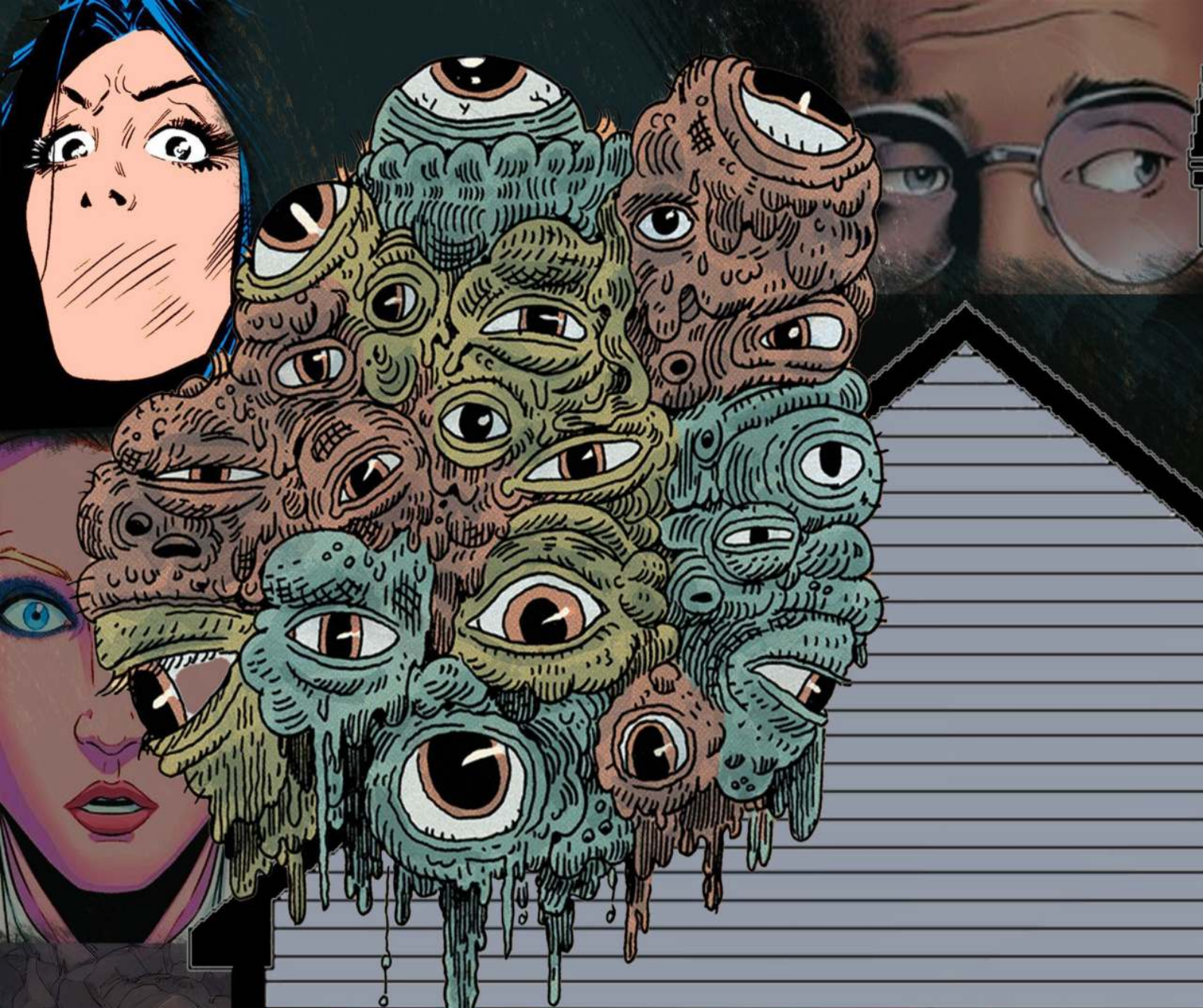
⑥

⑦



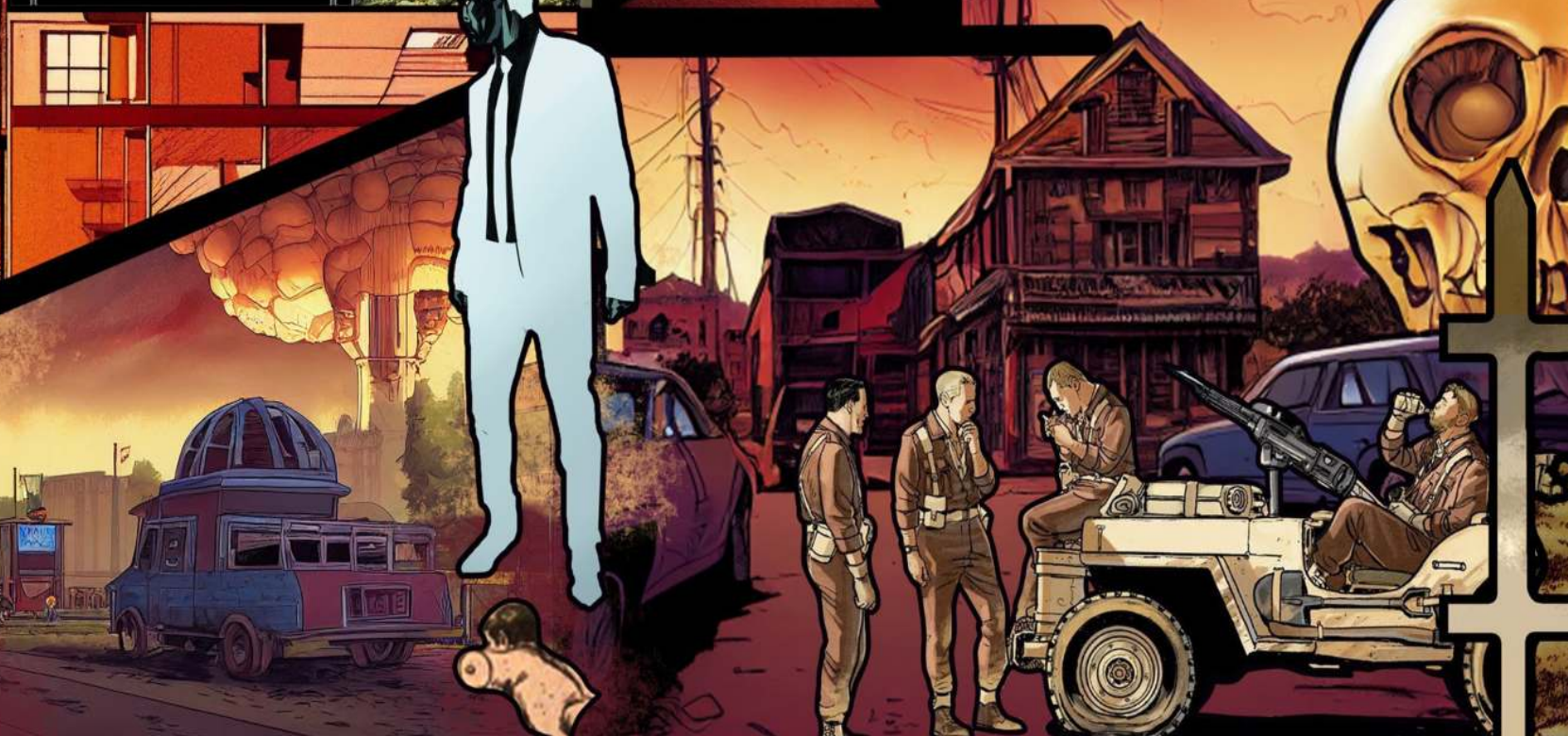


Testing Site: 37.1164° N, 116.1889° W  
Population: 1  
Sudo Name: Nuke Town



Subject's priority is survival. The subject is exhibiting signs of insanity; imagination is the subjects only restriction.

Subject #002 surveilled 24/7 by government operated drones. Subject is quarantined within domicile for weeks at a time with little to no exposure from the outside radiation upon bomb detonation.

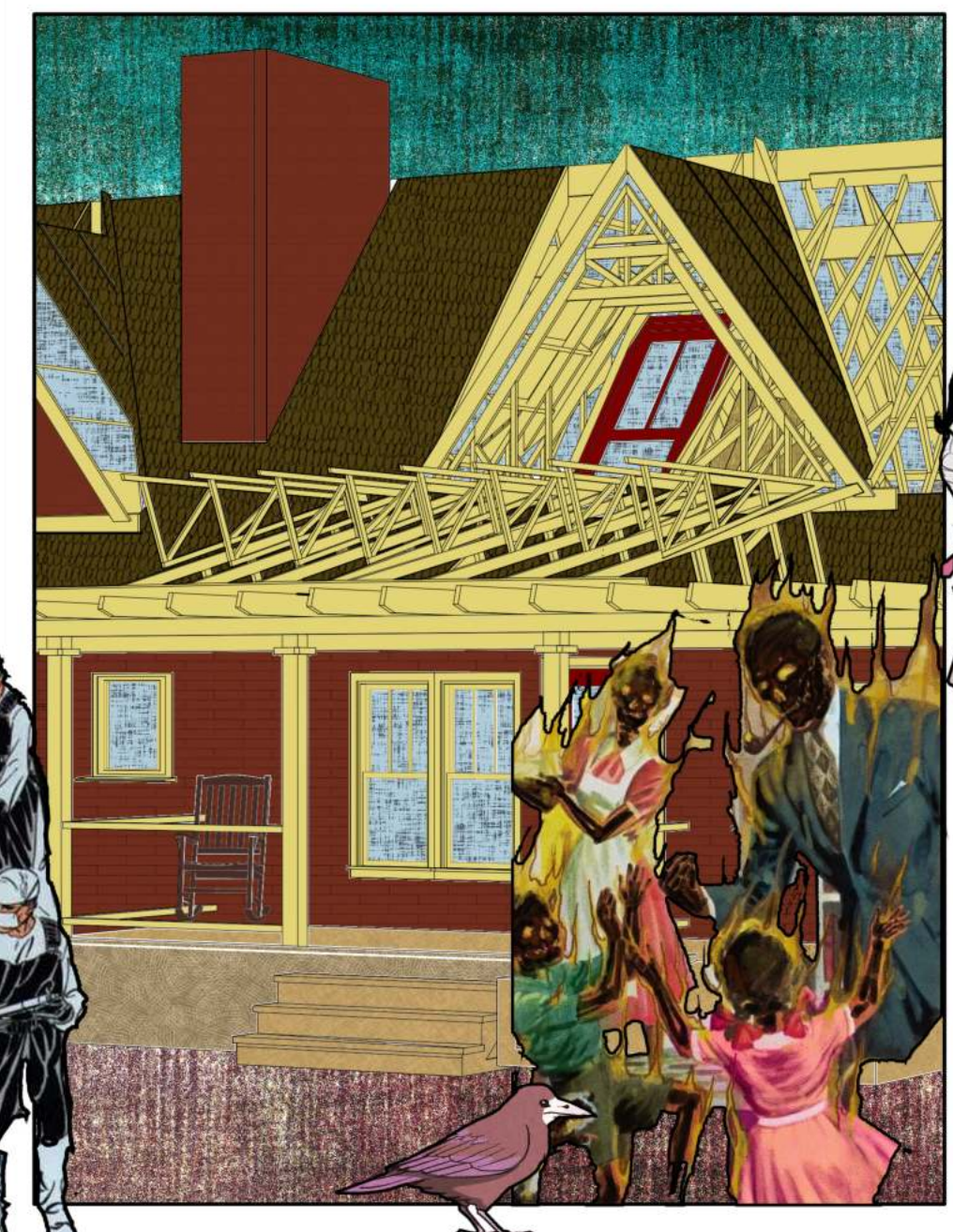
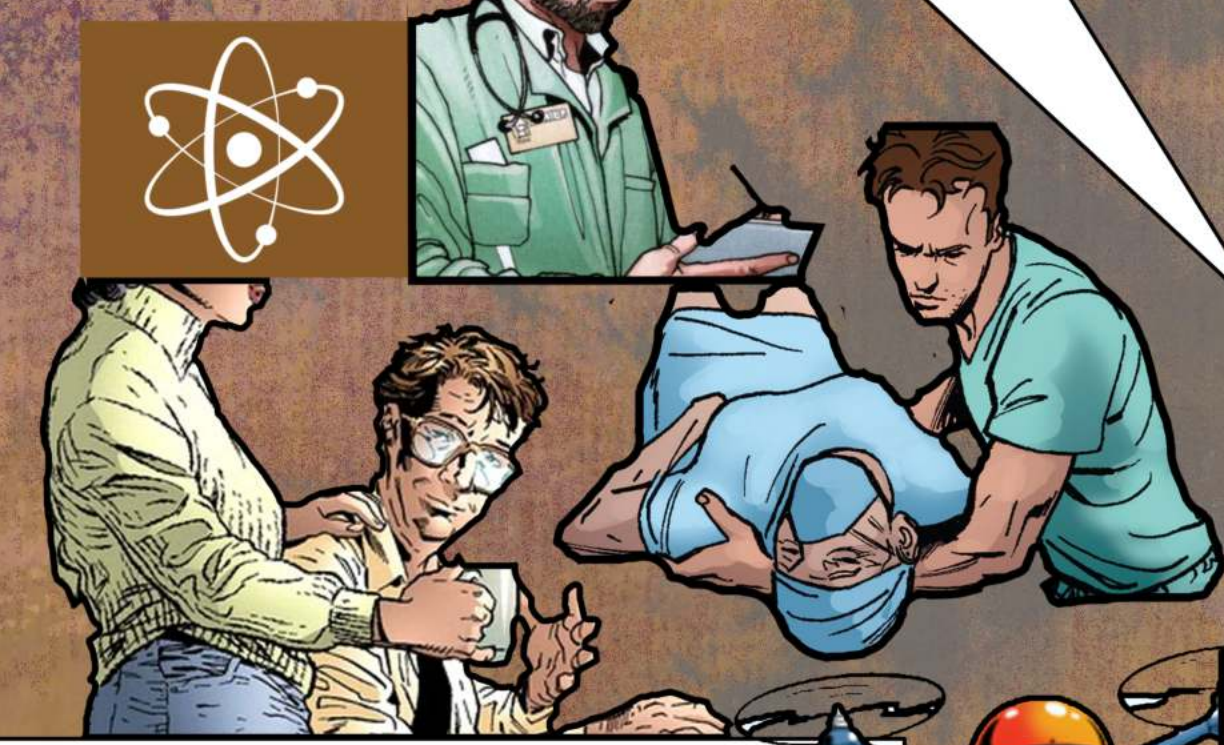


Subject's  
priority is  
happiness.  
The subject  
is exhibiting  
signs of  
ease; income  
is the  
subjects only  
restriction.



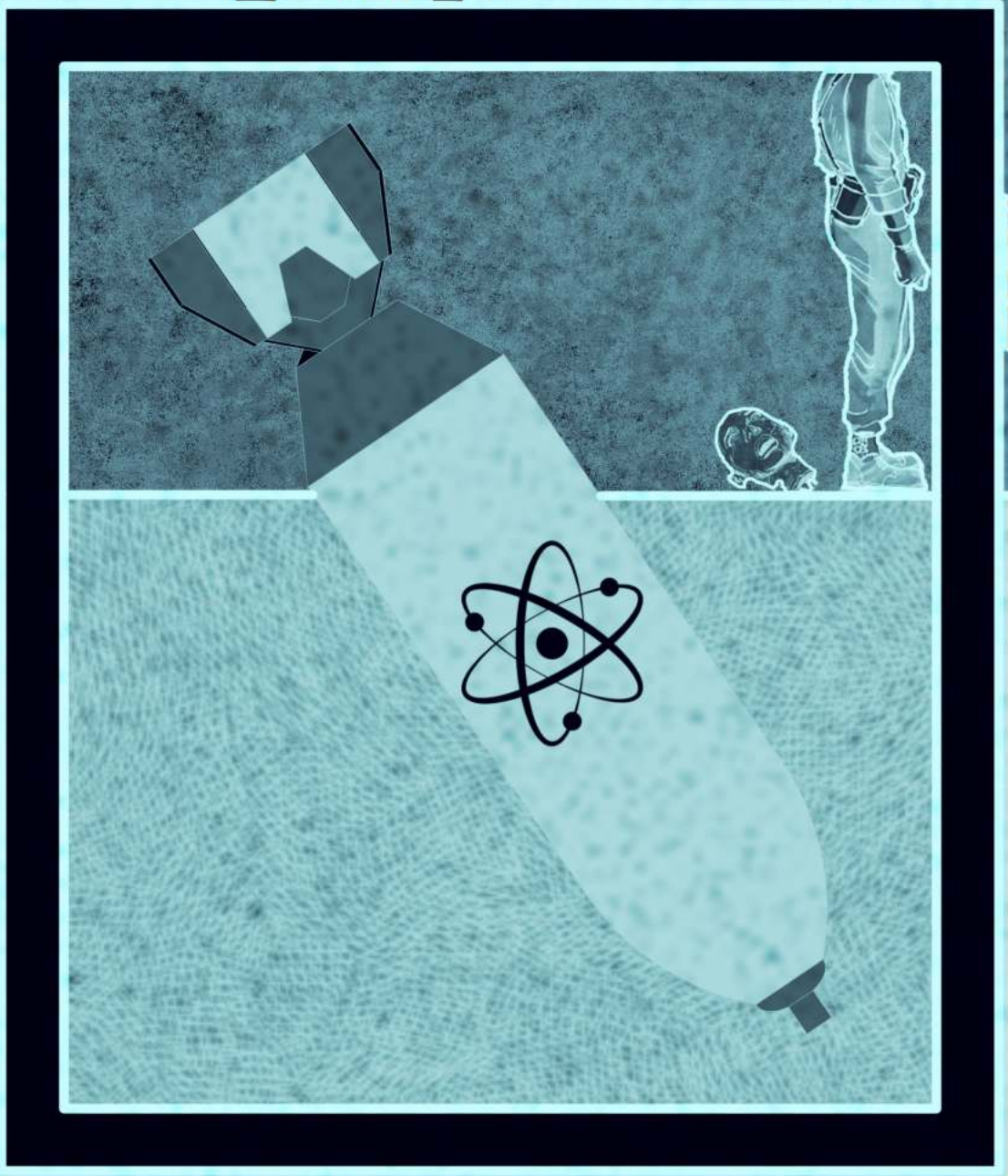
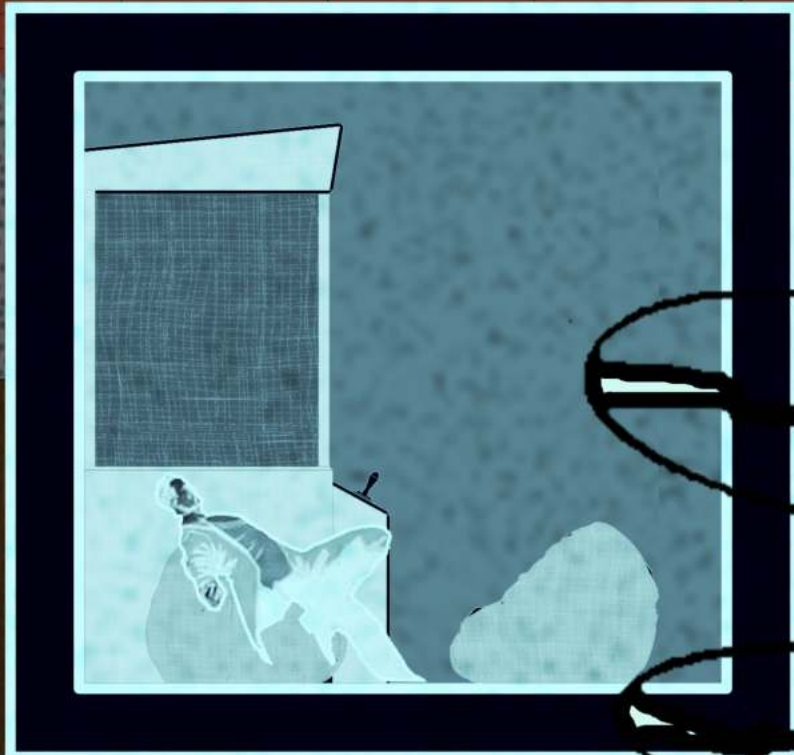
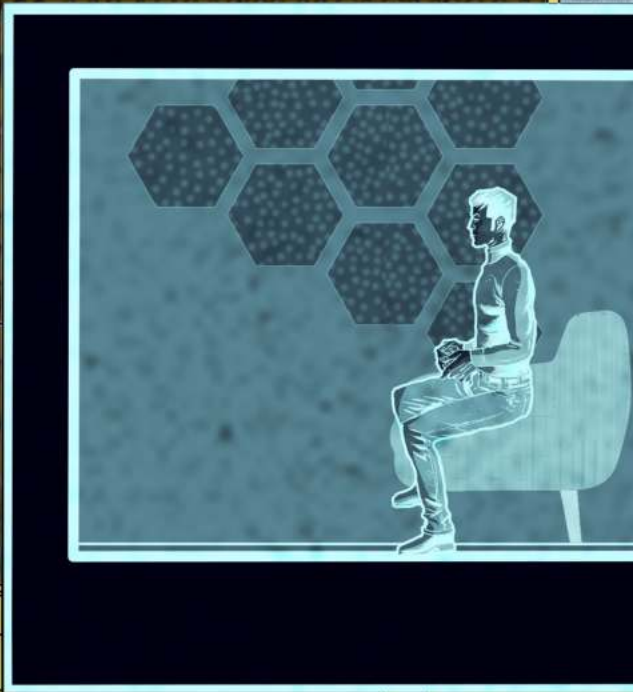
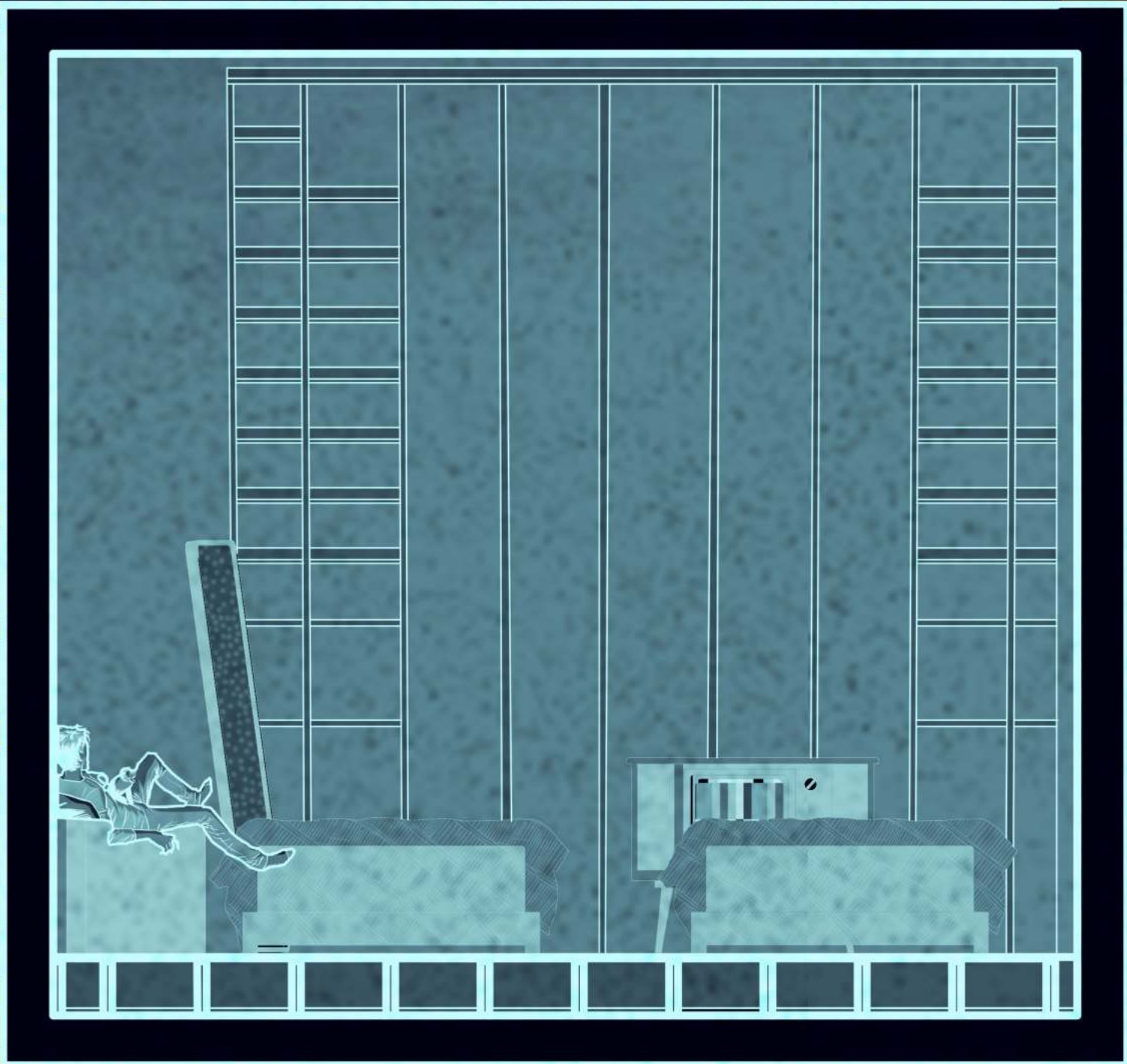
Subject  
#002 is  
exhibiting  
symptoms of  
euphoria  
supplemente  
d through  
domicile's  
utopic  
nature.





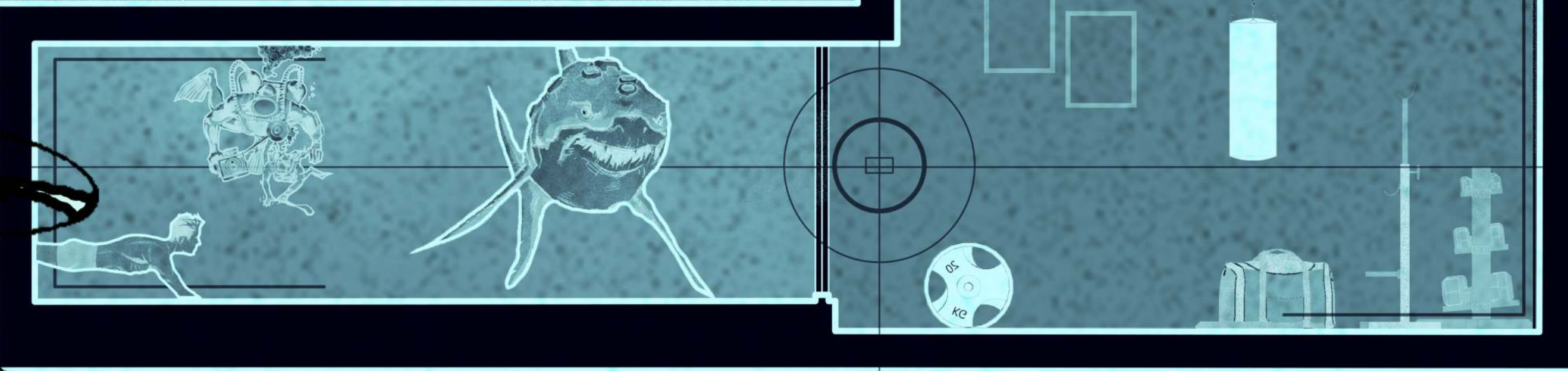
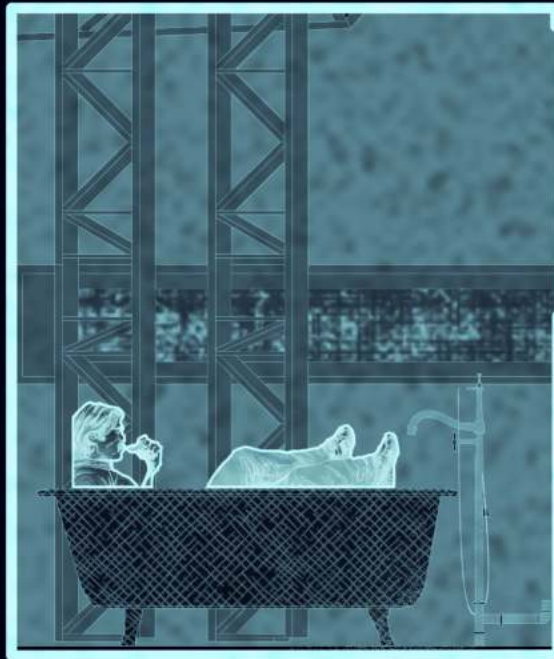
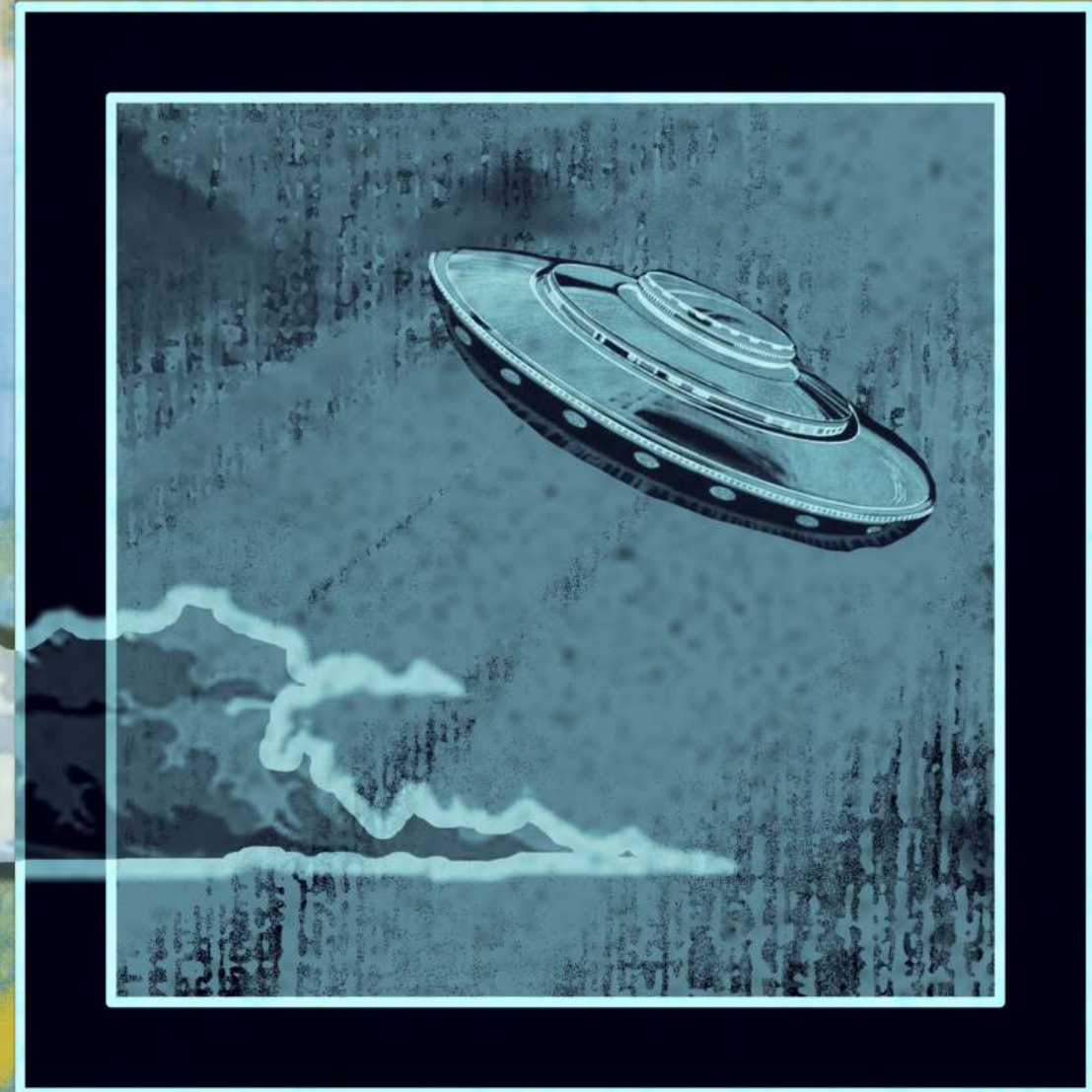
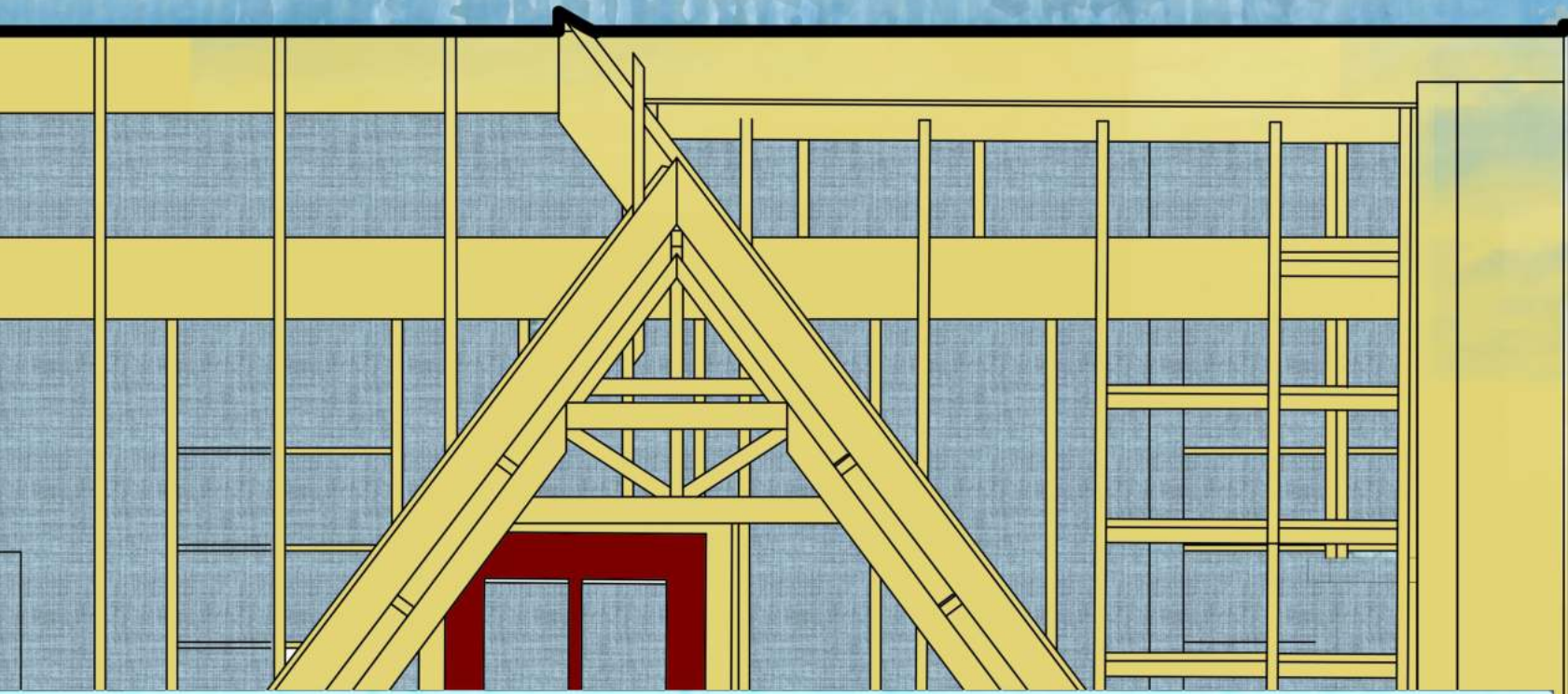
Through trial and assessment architectural elements of restoration such as structural elements and additional programming.

This approach by the government produce the surgical nature of the architectural language of the domicile.



Personalization becomes a symptom of the subject's reality.

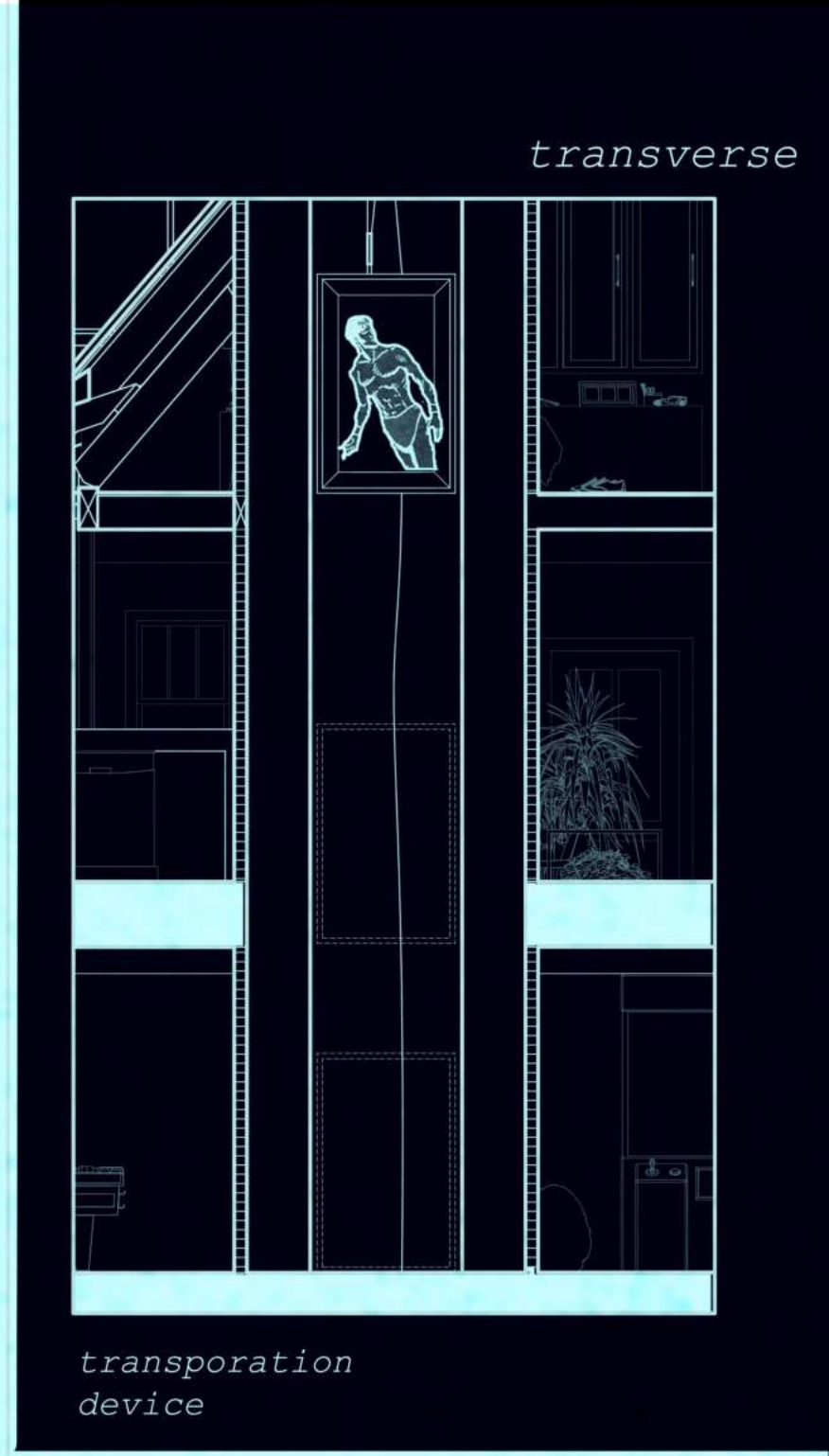
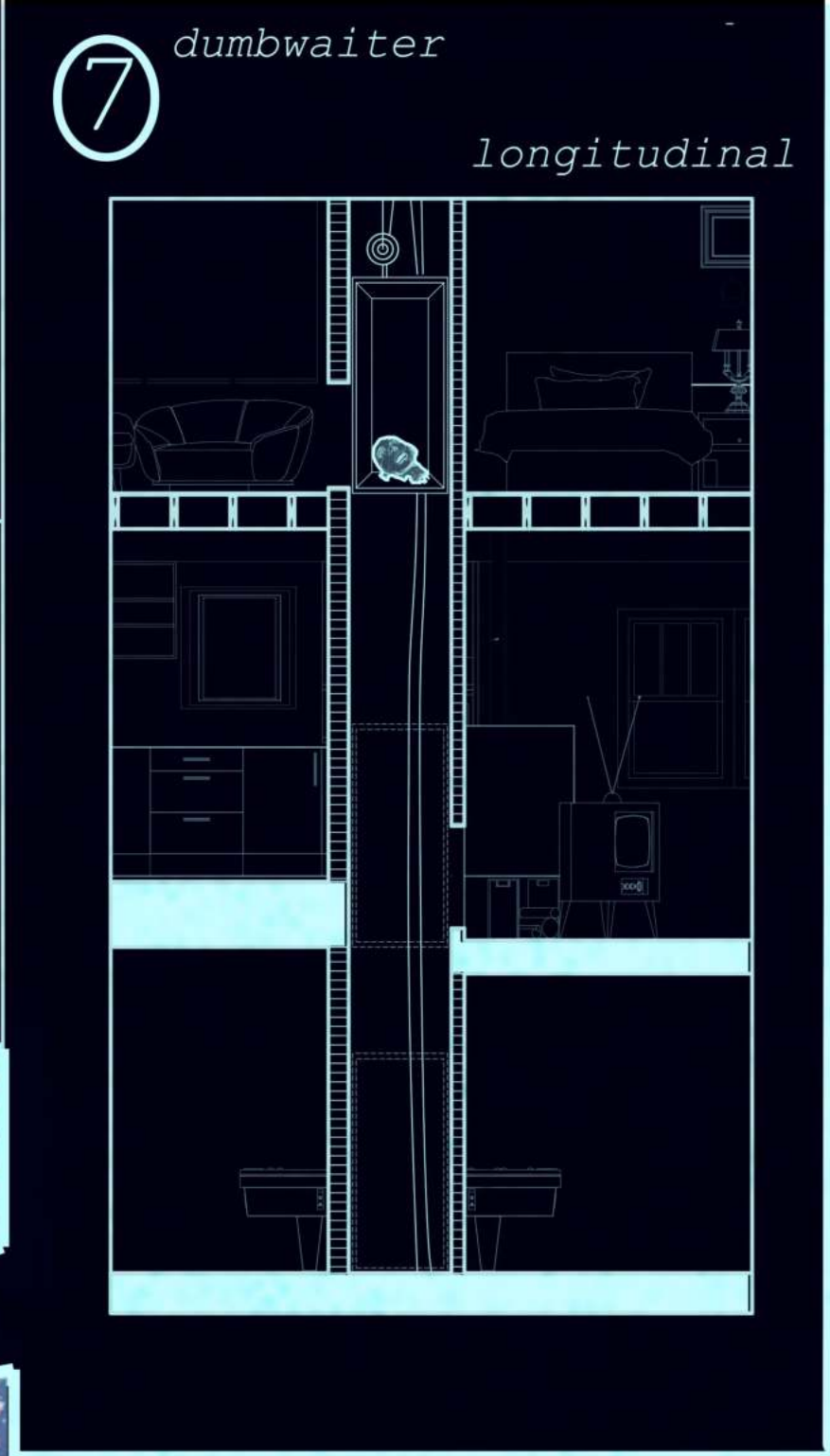
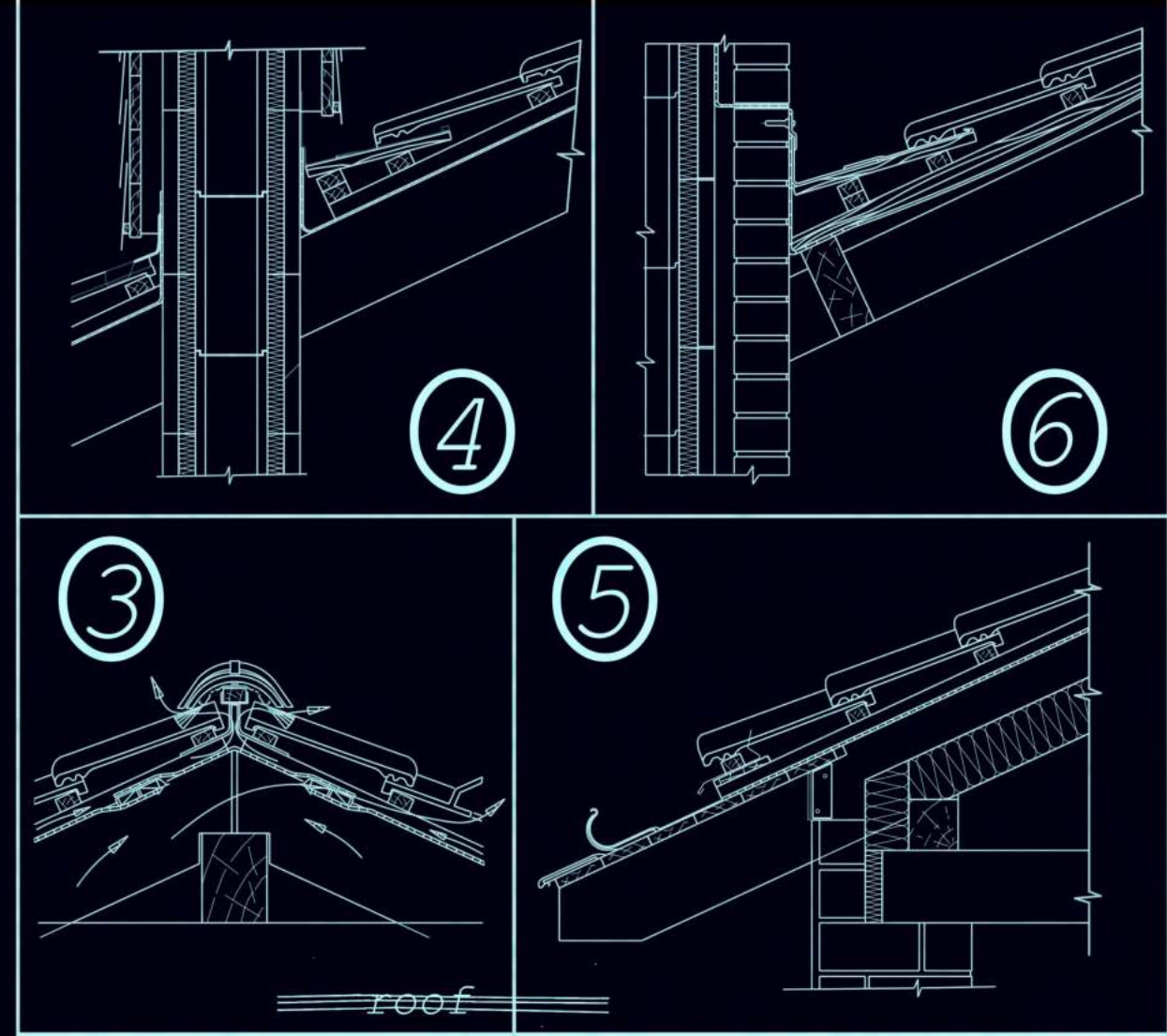
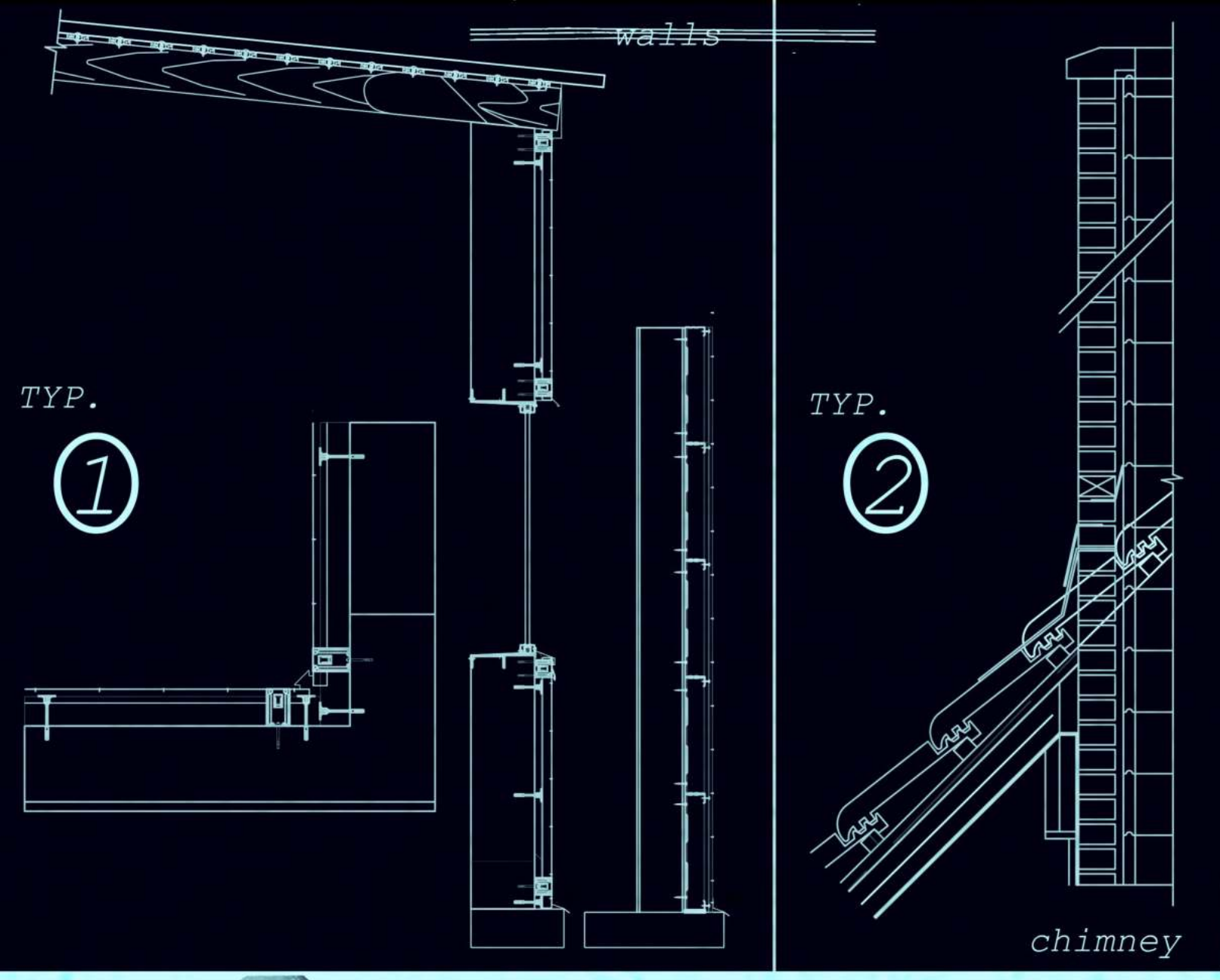
Government surveillance witnesses a state of dillusion where the subject accomodates for the lack of human interaction by populating the domicile with normalcies such as a full set living room and dining room.



Subject #002 seems to observe a routine where the action is interpreted in a rumbustious manner. Swimming in a pool to the subject is in reality, a lake by the house. Foliage observed throughout the domicile are merely composed of plastic, with the meer illusion of providing a source of subsistence in the kitchen.

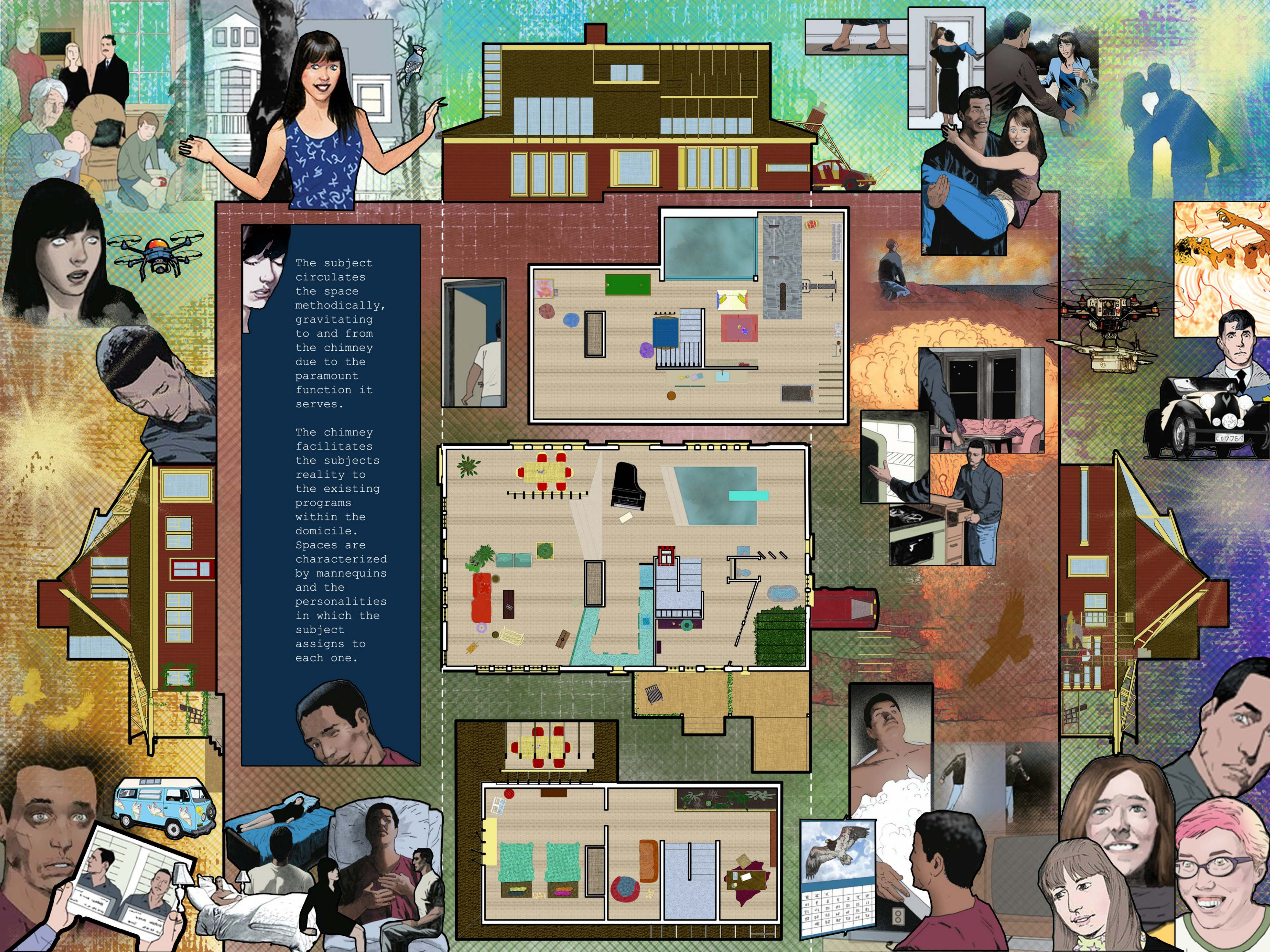
The domicile is seen as a home to the subject, the ultimate utopia for one.





After trials with 'Apple I' and 'Apple II' Houses.

Rexamination of domicile deduces typical assemblies...



The subject circulates the space methodically, gravitating to and from the chimney due to the paramount function it serves.

The chimney facilitates the subjects reality to the existing programs within the domicile. Spaces are characterized by mannequins and the personalities in which the subject assigns to each one.

