



grennoch residence



SITE



BRAYS BAYOU

Located blocks from Brays Bayou, the neighborhood suffered severe flooding during Hurricane Harvey. The potential of future flooding informs the design of the house.



traditional home
slab on grade construction with minimal elevation
that leaves home prone to increased flooding



typical response to flooding
traditional home elevated above the flood plain and
placed on a plinth with crawl space below



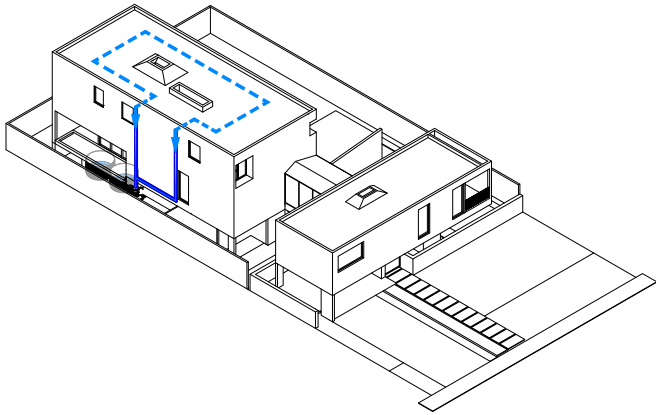
our response to flooding
contemporary home elevated to provide shaded
outdoor living space and connections to landscape



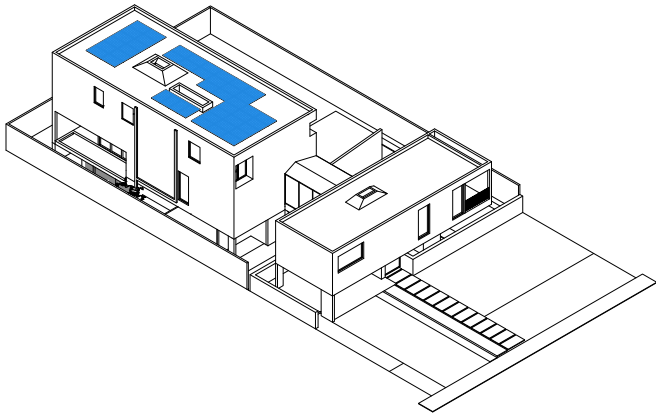


EXTERIOR

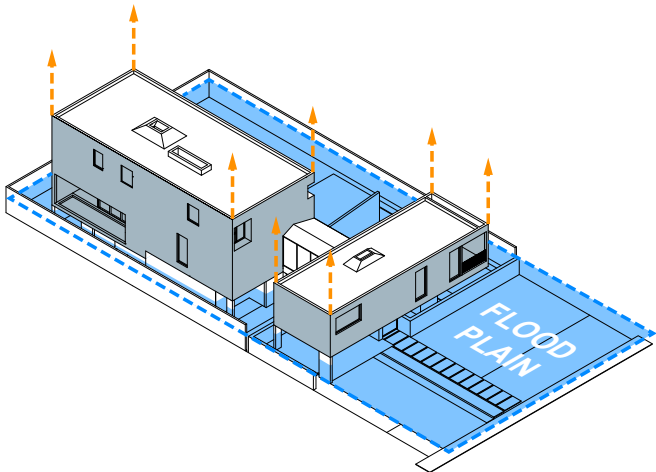
Floating above the ground, the house offers a new approach to resilience in the floodway



Scuppers collect rain water from the roof of the larger volume and store it within cisterns beneath the living room. The stored water provides irrigation for the adjacent garden.



A system of 13.7 kW array of photovoltaic panels and three batteries produce clean energy on a daily basis and cover roughly 50% of the home's energy use.



The design raises interior spaces above the ground plane to provide resilience against future flooding. Spaces for outdoor living, parking, and storage exist below.



EXTERIOR

Flood resilient materials define the ground level walls



EXTERIOR
First floor patio cantilevers over the pool

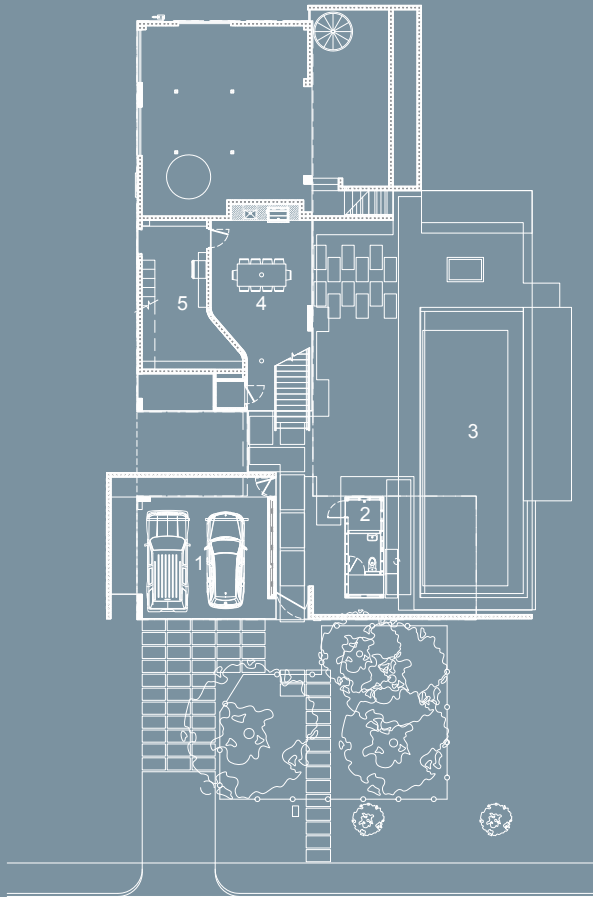


EXTERIOR

The ground offers spaces for outdoor dining, cooking, swimming, and storage

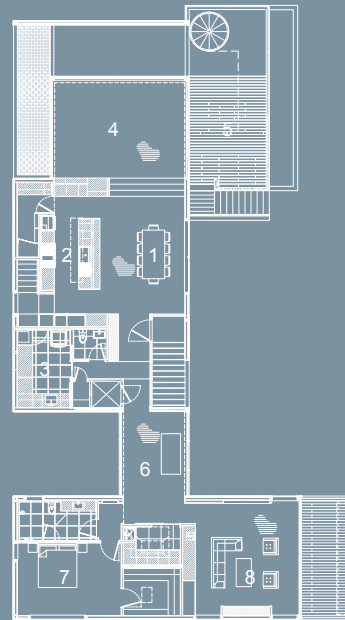
Ground Floor

1. Carport
2. Pool Bathroom and Storage
3. Pool
4. Outdoor Dining
5. Storage



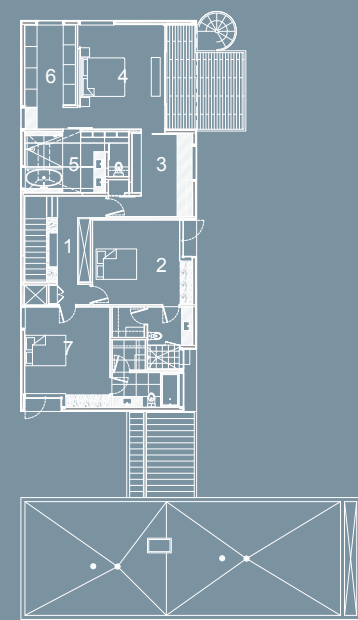
Second Floor

1. Dining Room
2. Kitchen
3. Mudroom
4. Living Room
5. Patio
6. Bridge
7. Guest Bedroom
8. Gameroom



Third Floor

1. Hallway
2. Bedroom
3. Study
4. Primary Bedroom
5. Primary Bathroom
6. Primary Closet
7. Bedroom





ENTRY

From the top of the entry stair, an aperture frames a view to the pool



LIVING ROOM

The living room opens to the exterior on three sides

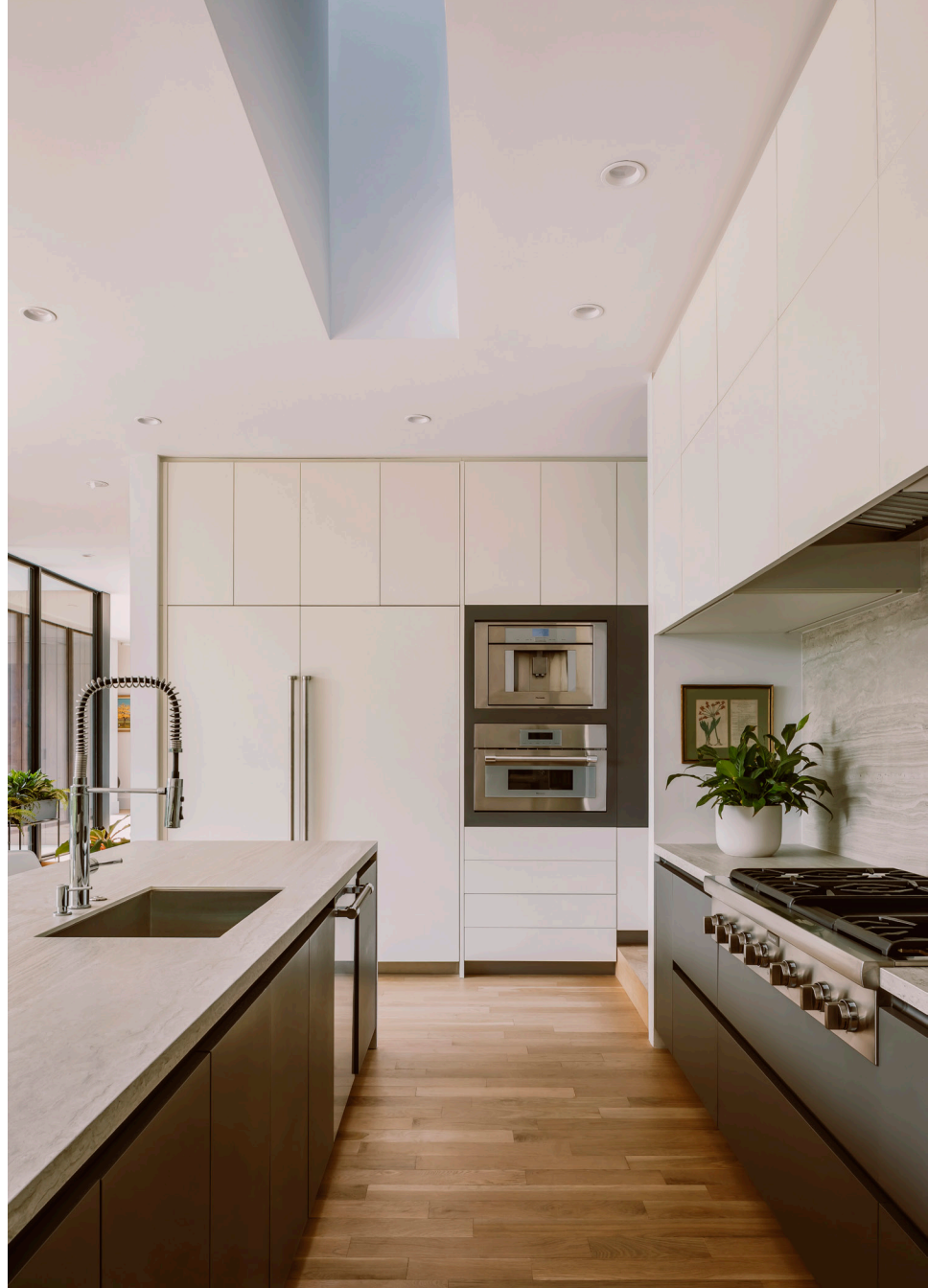


PATIO
A planted zone along the west side offers shade and privacy



LIVING ROOM

The living space steps down toward the level of the landscape



KITCHEN

A double height skylight brings natural light into the kitchen from above



KITCHEN
The kitchen conceals the stair to the second floor



BEDROOM

Children's bedrooms hold inset windows and built-in storage



PRIMARY BATHROOM
A vaulted ceiling and skylight balance the light in the bathroom



EXTERIOR

An exterior deck provides a shaded space overlooking the pool and neighborhood

