



Pioneers Club
Child Development Center

Spring, Texas
19,000 SF

Project Description

When demand for its first childcare center exceeded available space, the client engaged the team to design a second center on an adjacent site inside their campus. Pioneers Club Child Development Center is as focused on its playful character as it is on the health and safety of its patrons.

The Center is conveniently located at the entry of the campus on a narrow parcel of site connected via lush walking/biking trails, allowing parents to visit their children during the workday. Situated on a remediated brownfield with advance stormwater management in place, the project achieved Silver Certification under the LEED v3 rating system and is proud to be part of the larger holistic sustainability strategies on this large corporate campus.

The site's long and narrow proportions were the driving force behind the slender stepped layout of the building. The site also drove the design team to create a phased approach that would let the center expand over time without impacting operations.

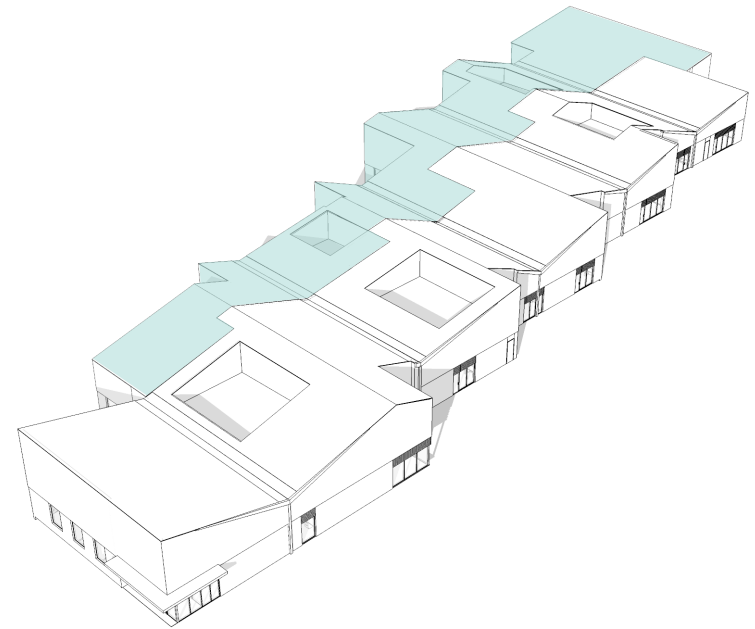
The undulating footprint and serrated roofline breaks down the mass of the building to a residential scale, which is more inviting and accessible to young children. Once inside, a myriad of discovery opportunities begins for the various ages that will occupy the building.

Classrooms unfold along the circulation spine, which is flooded with natural light and terminates in views of the grounds through full-height windows. Each classroom connects visually and physically to a private courtyard playground shaded by canopies and pine trees.





- Phase II
- Phase I



Massing Strategy

This childcare center's undulating footprint and serrated roofline break down the mass of the building to a residential scale, which is more inviting and accessible to young children.

Sculptural parapets energize the building's longest facade and conceal bulky mechanical equipment to preserve a clean aesthetic. Maintenance workers access mechanical systems from the exterior of the building, so that the classrooms remain secure and lessons can continue uninterrupted. Roof access points lead directly to flat wells so that maintenance crews can work safely without tie-offs.



|| The entrance sequence becomes a moment of discovery, while you approach the building from the parking lot the playfulness of the building reveals itself slowly, unraveling the serrated roofline and shifts in plan along its North-South elevation while getting closer.



Abstracted maps activate the walls of the reception area and the corridor leading to the classrooms. Reminiscent of origami, the reception desk's faceted form and folding planes continue the visual language introduced in the giraffe sculptures in the drop-off loop.



- Phase II
- Phase I: Flex Space/Circulation
- Phase I: Classrooms & Administration



Plan Strategy

The first phase, 19,000 SF, includes eight classrooms, administration space, central kitchen, a library and an art room. The classroom modules step back along the slender curving site to define private courtyards directly accessible from each classroom.

When demand justifies expansion, the client can build eight more classrooms, an additional 11,000 SF, without disrupting operations of Phase 1.



The generous circulation spaces act as an extension of the classroom where a variety of activities can take place. It is flooded with natural light and terminates in a glimpse into a classroom at one end or a view of the courtyards at the other through full-height windows.

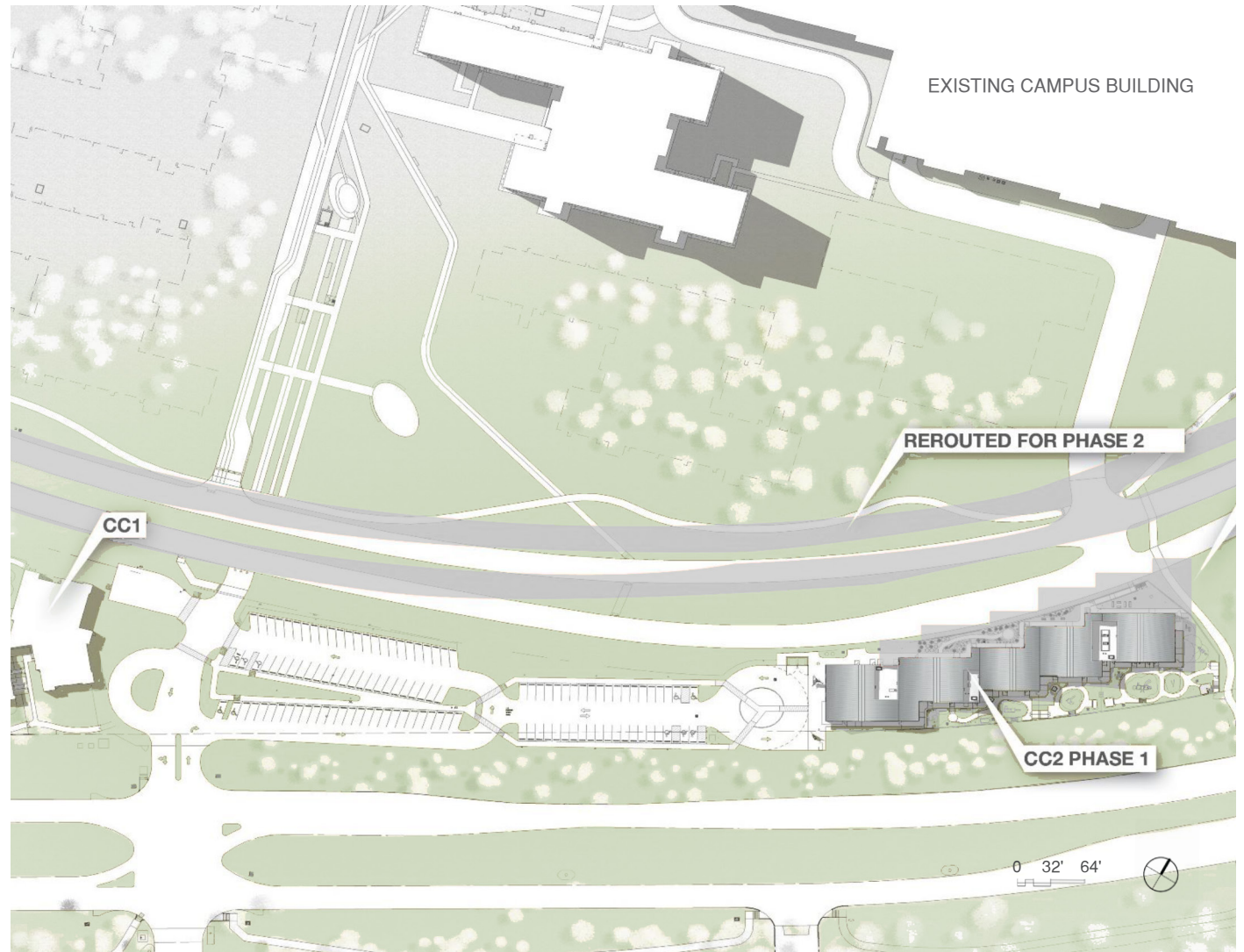


Thermal comfort, daylight access, healthy indoor air quality, and low-emitting materials were all drivers of building design and material selection.

Site Strategy

Located on a remediated brownfield with advance stormwater management in place the project achieved Silver Certification under the LEED v3 rating system and is proud to be part of larger holistic sustainability strategies on this large corporate campus.

While numerous sites were studied, the one selected for Childcare Center 2 was the only immediately buildable area available. Others would have required extensive site work. The site's long and narrow proportions were the driving force behind the slender stepped plan and the phased construction strategy.





|| The new childcare center threads into a tight site sandwiched between a public parkway and the campus ring road. The center is conveniently located at the entry of the campus and further connected via lush walking/biking trails, allowing parents to visit their children during the work day.



Located in the elbow of the circulation spine as it jogs along the building, the parent resource corner is inundated with natural light on two sides and offers views of the play spaces.



|| The building has several peek-a-boo moments at a child's eye level where children can catch a glimpse of the activities in the classroom. The details and scale were all designed with a child's perspective in mind.



The art room casework pulls colors from the palettes of each classroom to create a lively and energetic space that encourages kids' creativity and self-expression.

